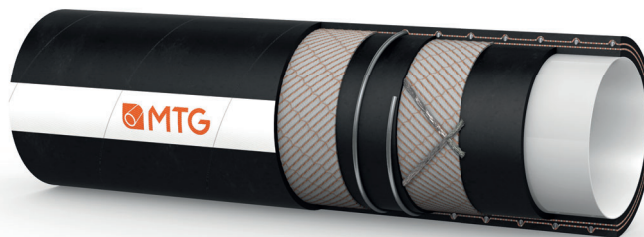




MANIFATTURA TUBI GOMMA S.p.A.

Grisignano di Zocco, 36040 (VI) ITALY
T. +39 0444.614755 | info@mtgspa.com
www.mtgspa.com



APPLICATION

- Multipurpose hose for suction and delivery of a wide range of chemical, alcoholic and food products.
- Normally installed on tank trucks, unloading platforms, chemical laboratories, stationary and mobile systems in food and chemical industries.

CONSTRUCTION

TUBE

- UPE (Ultra High Molecular Weight Polyethylene), light colour, mirror-smooth.
- Compliance: FDA Standards, D.M. 21/03/73 and following amendments, Regulation EU n. 10/2011.

REINFORCEMENT

- High strength plies of synthetic cord.
- Embedded steel helix wire.
- Built-in copper wires.

COVER

- EPDM rubber, black colour, antistatic ($R < 10^6 \Omega$), resistant to abrasion, ozone and weather, smooth, cloth finish.

MAIN BENEFITS

- The inner tube of the hose POLYSPIR/UPE-BN is suitable for conveying alcohol with a concentration up to 98%.
- It complies with the Reg. EC 1935/2004 and 2023/2006/EC (GMP).
- The MTG production cycle is free from animal derived ingredients, phthalates, adipates and materials subject to restrictions according to Reg. EC 1907/2006 (REACH).

TEMPERATURE RANGE

- From -35°C to +100°C.
- Resistant to steam up to +130°C for max. 30 minutes.

SAFETY FACTOR

- ≥ 4 times working pressure.

MARKING



POLYSPIR UPE



TECHNICAL SPECIFICATIONS

SIZE TOLERANCES: Inner diameter: ISO 1307 - Wall Thickness: DIN 7715 T4 S2 - Length: ISO 1307

Inner Diameter mm	Outer diameter mm	Wall thickness mm	Working pressure BAR	Burst pressure BAR	Vacuum BAR	Min. bending radius mm	Approx. weight kg/m	Max. length m
13	24	5.5	10	40	-0.90	80	0.45	40
19	31	6.0	10	40	-0.90	115	0.65	40
25	37	6.0	10	40	-0.90	150	0.82	40
32	44	6.0	10	40	-0.90	190	0.98	40
35	47	6.0	10	40	-0.90	210	1.05	40
38	51	6.5	10	40	-0.90	230	1.25	40
40	53	6.5	10	40	-0.90	240	1.30	40
50	64	7.0	10	40	-0.90	300	1.84	40
50	66	8.0	10	40	-0.90	300	2.00	40
63.5	79.5	8.0	10	40	-0.90	390	2.55	40
70	86	8.0	10	40	-0.90	420	2.70	40
75	91	8.0	10	40	-0.90	480	3.00	40
80	96	8.0	10	40	-0.90	480	3.15	40
100	118	9.0	10	40	-0.90	600	4.90	40
102	120	9.0	10	40	-0.90	600	4.92	40

Chemical resistance acc. to MTG Chemical Resistance Chart. Above technical data refer to application at room temperature (+20°C). Other sizes and colours are available upon request. Please contact our Sales Department.



Cod. IT-P00075

UPDATED: 04/18
Rev: 001


MANIFATTURA TUBI GOMMA S.p.A.

Grisignano di Zocco, 36040 (VI) ITALY
T. +39 0444.614755 | info@mtgspa.com
www.mtgspa.com



APPLICATION

- Multipurpose suction and delivery hose for conveying a wide range of aggressive chemicals.
- Engineered to ensure dissipation of electrostatic charges not only on the surface, but also through the hose wall (Electrical resistance: $R < 10^9 \Omega$).

CONSTRUCTION

TUBE

- UPE (Ultra High Molecular Weight Polyethylene), antistatic ($R < 10^6 \Omega$), black, smooth.

REINFORCEMENT

- High strength plies of synthetic cord.
- Embedded steel helix wires.
- Copper wires on request.

COVER

- EPDM rubber, black, antistatic ($R < 10^6 \Omega$), resistant to abrasion, ozone and weather, wide corrugated, cloth finish.

STANDARDS

- Execution in accordance with EN 12115:2011.

TEMPERATURE RANGE

- In accordance with EN 12115:2011.
- Resistant to steam up to $+130^\circ\text{C}$ for max. 30 minutes.

SAFETY FACTOR

- ≥ 4 times working pressure.

ELECTRICAL PROPERTIES

- Electrical resistance through the hose wall: $R < 10^9 \Omega$.
- Identification symbol:
 - Ω/T for version without copper wires;
 - M/T for version with copper wires.

NOTE

- The wide corrugation of the outer surface allows an easy and safe installation of the fittings (no cuffs needed).

MARKING

- Embossed tape according to EN 12115:2011, lengthwise.

MTG MANICHEM UPE MADE IN ITALY

TECHNICAL SPECIFICATIONS

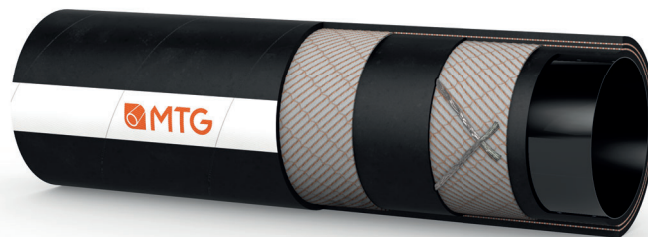
SIZE TOLERANCES: Inner diameter: EN 12115 - Outer diameter: EN 12115 - Length: ISO 1307

Inner Diameter mm	Outer diameter mm	Wall thickness mm	Working pressure BAR	Burst pressure BAR	Vacuum BAR	Min. bending radius mm	Approx. weight kg/m	Max. length m
19	31	6.0	10	40	-0.90	125	0.65	40
25	37	6.0	10	40	-0.90	150	0.80	40
32	44	6.0	10	40	-0.90	175	0.95	40
38	51	6.5	10	40	-0.90	225	1.20	40
50	66	8.0	10	40	-0.90	275	1.90	40
63.5	79.5	8.0	10	40	-0.90	300	2.60	40
75	91	8.0	10	40	-0.80	350	3.00	40
100	116	8.0	10	40	-0.80	450	4.10	40

Chemical resistance acc. to MTG Chemical Resistance Chart. Above technical data are based on application at room temperature ($+20^\circ\text{C}$). Other sizes are available on request.


MANIFATTURA TUBI GOMMA S.p.A.

Grisignano di Zocco, 36040 (VI) ITALY
T. +39 0444.614755 | info@mtgspa.com
www.mtgspa.com



APPLICATION

- Multipurpose delivery hose for conveying a wide range of aggressive chemicals.
- Normally installed on tank trucks and unloading platforms, recommended for applications in chemical laboratories and industries.

CONSTRUCTION

TUBE

- UPE (Ultra High Molecular Weight Polyethylene), neutral, smooth.
- Resistance: according to MTG Chemical Resistance Chart.

REINFORCEMENT

- High strength plies of synthetic cord.
- Built-in copper wires.

COVER

- EPDM rubber, black, smooth, antistatic ($R < 10^6 \Omega$), resistant to abrasion, ageing and weather, cloth finish.

TEMPERATURE RANGE

- From -35°C to $+100^{\circ}\text{C}$.
- Resistant to steam up to $+130^{\circ}\text{C}$ for max. 30 minutes.

SAFETY FACTOR

- ≥ 3 times working pressure.

MARKING

MTG PROCHIM UPE $R < 10^6 \Omega$ **MADE IN ITALY**

TECHNICAL SPECIFICATIONS

SIZE TOLERANCES: Inner diameter: ISO 1307 - Wall Thickness: DIN 7715 T4 S2 - Length: ISO 1307

Inner Diameter mm	Outer diameter mm	Wall thickness mm	Working pressure BAR	Burst pressure BAR	Vacuum BAR	Min. bending radius mm	Approx. weight kg/m	Max. length m
10	19	4.5	10	30	-0.60	60	0.24	40
13	22	4.5	10	30	-0.60	80	0.29	40
16	25	4.5	10	30	-0.50	100	0.34	40
19	30	5.5	10	30	-0.50	120	0.49	40
25	37	6.0	10	30	-0.50	150	0.66	40
30	42	6.0	10	30	-0.40	200	0.77	40
32	44	6.0	10	30	-0.30	200	0.81	40
35	48	6.5	10	30	-0.30	240	0.98	40
38	52	7.0	10	30	-0.30	240	1.05	40
40	54	7.0	10	30	-0.30	240	1.10	40
45	59	7.0	10	30	-0.20	280	1.21	40
50	65	7.5	10	30	-0.20	300	1.47	40
60	76	8.0	10	30	-	360	1.84	40
63.5	79.5	8.0	10	30	-	390*	1.93	40
75	91	8.0	10	30	-	450*	2.20	40
80	96	8.0	10	30	-	480*	2.30	40
90	106	8.0	10	30	-	540*	2.60	40
100	116	8.0	10	30	-	600*	2.82	40

(*) The bending radius can be reached at a pressure of ≥ 1 bar.

Chemical resistance acc. to MTG Chemical Resistance Chart. Above technical data are based on application at room temperature ($+20^{\circ}\text{C}$). Other sizes are available on request.

Cod. IT-P00041

UPDATED: 01/19

Rev: 001

MANIFATTURA TUBI GOMMA S.p.A.

Grisignano di Zocco, 36040 (VI) ITALY
T. +39 0444.614755 | info@mtgspa.com
www.mtgspa.com



APPLICATION

- Multipurpose suction and delivery hose for conveying a wide range of aggressive chemicals.
- Normally installed on tank trucks and unloading platforms, recommended for applications in chemical laboratories and industries.

CONSTRUCTION

TUBE

- UPE (Ultra High Molecular Weight Polyethylene), neutral, smooth.
- Resistance: according to MTG Chemical Resistance Chart.

REINFORCEMENT

- High strength plies of synthetic cord.
- Embedded steel helix wire.
- Built-in copper wires.

COVER

- EPDM rubber, black, smooth, antistatic ($R < 10^6 \Omega$), resistant to abrasion, ageing and weather, cloth finish.

CERTIFICATIONS

- Hose approved by the Institute Ineris, attestation nr. INERIS-16-AM-340, for use in Atex areas.

TEMPERATURE RANGE

- From -35°C to $+100^{\circ}\text{C}$.
- Resistant to steam up to $+130^{\circ}\text{C}$ for max. 30 minutes.

SAFETY FACTOR

- ≥ 3 times working pressure.

MARKING


 $R < 10^6 \Omega$

HOSE TESTED FOR USE IN ATEX ZONES
ATTESTATION NUMBER INERIS-16-AM-340

MADE IN
ITALY

TECHNICAL SPECIFICATIONS

SIZE TOLERANCES: Inner diameter: ISO 1307 - Wall Thickness: DIN 7715 T4 S2 - Length: ISO 1307

Inner Diameter mm	Outer diameter mm	Wall thickness mm	Working pressure BAR	Burst pressure BAR	Vacuum BAR	Min. bending radius mm	Approx. weight kg/m	Max. length m
13	24	5.5	10	30	-0.90	60	0.41	40
16	27	5.5	10	30	-0.90	80	0.51	40
19	31	6.0	10	30	-0.90	100	0.63	40
25	37	6.0	10	30	-0.90	125	0.77	40
32	44	6.0	10	30	-0.90	180	0.94	40
38	51	6.5	10	30	-0.90	225	1.30	40
40	54	7.0	10	30	-0.90	225	1.42	40
50	65	7.5	10	30	-0.90	275	1.82	40
60	75	7.5	10	30	-0.90	300	2.25	40
63.5	78.5	7.5	10	30	-0.90	320	2.35	40
70	86	8.0	10	30	-0.90	350	2.80	40
75	91	8.0	10	30	-0.90	380	3.00	40
80	96	8.0	10	30	-0.90	400	3.18	40
90	108	9.0	10	30	-0.90	480	4.30	40
100	118	9.0	10	30	-0.90	500	4.88	40
102	120	9.0	10	30	-0.90	500	4.98	40
125	147	11.0	10	30	-0.80	1000	7.20	20
150	174	12.0	10	30	-0.80	1200	8.60	20
152	176	12.0	10	30	-0.80	1200	8.75	20

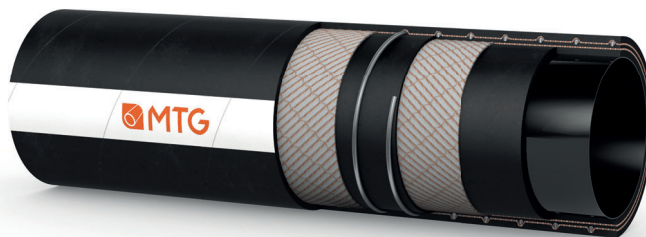
Chemical resistance acc. to MTG Chemical Resistance Chart. Above technical data refer to application at room temperature ($+20^{\circ}\text{C}$).
Other sizes and colours are available upon request. Please contact our Sales Department.

Cod. IT-P00005

UPDATED: 04/18
Rev: 000


MANIFATTURA TUBI GOMMA S.p.A.

Grisignano di Zocco, 36040 (VI) ITALY
T. +39 0444.614755 | info@mtgspa.com
www.mtgspa.com



APPLICATION

- Multipurpose suction and delivery hose for conveying a wide range of aggressive chemicals.
- Engineered to ensure dissipation of electrostatic charges not only on the surface, but also through the hose wall (Electrical resistance: $R < 10^9 \Omega$).

CONSTRUCTION

TUBE

- UPE (Ultra High Molecular Weight Polyethylene), antistatic ($R < 10^6 \Omega$), black, smooth.

REINFORCEMENT

- High strength plies of synthetic cord.
- Embedded steel helix wire.
- Copper wires on request.

COVER

- EPDM rubber (code 104N), black, antistatic ($R < 10^6 \Omega$), resistant to abrasion, ozone and weather, smooth, cloth finish.

STANDARDS

- Execution in accordance with EN 12115:2011.

CERTIFICATIONS

- Hose approved by the Institute Ineris, attestation nr. INERIS-16-AM-339, for use in Atex areas.

TEMPERATURE RANGE

- In accordance with EN 12115:2011.
- Resistant to steam up to +130°C for max. 30 minutes.

SAFETY FACTOR

- ≥ 4 times working pressure up to ID 75 mm.
- ≥ 3 times working pressure over ID 75 mm.

ELECTRICAL PROPERTIES

- Electrical resistance through the hose wall: $R < 10^9 \Omega$.
- Identification symbol:
 - Ω/T for version without copper wires;
 - M/T for version with copper wires.

MARKING

- Embossed tape according to EN 12115:2011, lengthwise.


MANICHEM UPE

HOSE TESTED FOR USE IN ATEX ZONES
ATTESTATION NUMBER INERIS-16-AM-339

MADE IN ITALY

TECHNICAL SPECIFICATIONS

SIZE TOLERANCES: Inner diameter: EN 12115 - Outer diameter: EN 12115 - Length: ISO 1307

Inner Diameter mm	Outer diameter mm	Wall thickness mm	Working pressure BAR	Burst pressure BAR	Vacuum BAR	Min. bending radius mm	Approx. weight kg/m	Max. length m
19	31	6.0	16	64	-0.90	125	0.60	40
25	37	6.0	16	64	-0.90	150	0.80	40
32	44	6.0	16	64	-0.90	175	1.00	40
38	51	6.5	16	64	-0.90	225	1.30	40
50	66	8.0	16	64	-0.90	275	2.00	40
51	67	8.0	16	64	-0.90	275	2.05	40
63.5	79.5	8.0	16	64	-0.90	300	2.70	40
75	91	8.0	16	64	-0.80	350	3.00	40
76	92	8.0	16	48	-0.80	350	3.05	40
100	118	9.0	16	48	-0.80	450	4.90	40
102	120	9.0	16	48	-0.80	450	5.00	40

Chemical resistance acc. to MTG Chemical Resistance Chart. Above technical data are based on application at room temperature (+20°C). Other sizes are available on request.

Cod. IT-M00034

UPDATED: 10/18
Rev: 004



MANIFATTURA TUBI GOMMA S.p.A.

Grisignano di Zocco, 36040 (VI) ITALY
T. +39 0444.614755 | info@mtgspa.com
www.mtgspa.com



APPLICATION

- Multipurpose delivery hose for conveying a wide range of aggressive chemicals.
- Engineered to ensure dissipation of electrostatic charges not only on the surface, but also through the hose wall (Electrical resistance: $R < 10^9 \Omega$).

CONSTRUCTION

TUBE

- UPE (Ultra High Molecular Weight Polyethylene), antistatic ($R < 10^6 \Omega$), black, smooth.

REINFORCEMENT

- High strength plies of synthetic cord.
- Copper wires on request.

COVER

- EPDM rubber (code 104N), black, antistatic ($R < 10^6 \Omega$), resistant to abrasion, ozone and weather, smooth, cloth finish.

STANDARDS

- Execution in accordance with EN 12115:2011.

TEMPERATURE RANGE

- In accordance with EN 12115:2011.
- Resistant to steam up to $+130^\circ\text{C}$ for max. 30 minutes.

SAFETY FACTOR

- ≥ 4 times working pressure.

ELECTRICAL PROPERTIES

- Electrical resistance through the hose wall: $R < 10^9 \Omega$.
- Identification symbol:
 - Ω/T for version without copper wires;
 - M/T for version with copper wires.

MARKING

- Embossed tape according to EN 12115:2011, lengthwise.

MTG MANICHEM UPE MADE IN ITALY

TECHNICAL SPECIFICATIONS

SIZE TOLERANCES: Inner diameter: EN 12115 - Outer diameter: EN 12115 - Length: ISO 1307

Inner Diameter mm	Outer diameter mm	Wall thickness mm	Working pressure BAR	Burst pressure BAR	Vacuum BAR	Min. bending radius mm	Approx. weight kg/m	Max. length m
13	23	5.0	16	64	-0.50	90	0.35	40
19	31	6.0	16	64	-0.50	125	0.55	40
25	37	6.0	16	64	-0.40	150	0.70	40
32	44	6.0	16	64	-0.40	175	0.85	40
38	51	6.5	16	64	-0.40	225	1.00	40
50	66	8.0	16	64	-0.30	275	1.70	40
51	67	8.0	16	64	-0.30	275	1.75	40
63.5	79.5	8.0	16	64	---	300	2.10	40
75	91	8.0	16	64	---	350*	2.50	40
76	92	8.0	16	64	---	350*	2.55	40
100	116	8.0	16	64	---	450*	3.20	40
102	118	8.0	16	64	---	450*	3.30	40

(*) The bending radius can be reached at a pressure of ≥ 1 bar.

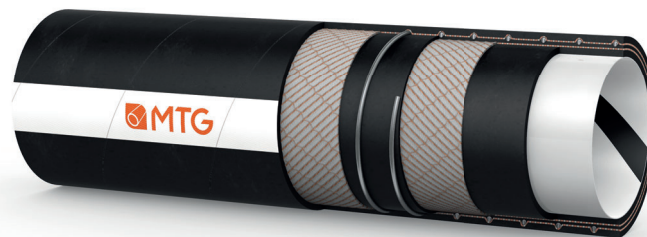
Chemical resistance acc. to MTG Chemical Resistance Chart. Above technical data are based on application at room temperature ($+20^\circ\text{C}$). Other sizes are available on request.

Cod. IT-M00033

UPDATED: 10/18
Rev: 004

MANIFATTURA TUBI GOMMA S.p.A.

Grisignano di Zocco, 36040 (VI) ITALY
T. +39 0444.614755 | info@mtgspa.com
www.mtgspa.com



APPLICATION

- Multipurpose suction and delivery hose for conveying a wide range of chemicals and foodstuff.

CONSTRUCTION

TUBE

- UPE (Ultra High Molecular Weight Polyethylene), light colour, smooth, with black antistatic ($R \leq 10^6 \Omega$) helical UPE stripe.
- Compliance: FDA Standards, D.M. 21.03.73 and following amendments, Regulation EU n. 10/2011.

REINFORCEMENT

- High strength plies of synthetic cord.
- Embedded steel helix wire.
- Built-in copper wires on request.

COVER

- EPDM rubber (code 104N), black, antistatic ($R < 10^6 \Omega$), resistant to abrasion, ozone and weather, smooth, cloth finish.

STANDARDS

- Execution in accordance with EN 12115:2011.

SAFETY FACTOR

- ≥ 4 times working pressure up to ID 75 mm.
- ≥ 3 times working pressure over ID 75 mm.

CERTIFICATIONS

- Hose approved by the Institute Ineris, attestation nr. INERIS-16-AM-341, for use in Atex areas.

TEMPERATURE RANGE

- In accordance with EN 12115:2011.
- Resistant to steam up to $+130^\circ\text{C}$ for max. 30 minutes.

ELECTRICAL PROPERTIES

- Electrical resistance through the hose wall: $R < 10^9 \Omega$.
- Identification symbol:
 - Ω/T for version without copper wires;
 - M/T for version with copper wires.

MARKING

- Embossed tape according to EN 12115:2011, lengthwise.

MTG MANIPHARM UPE HOSE TESTED FOR USE IN ATEX ZONES ATTESTATION NUMBER INERIS-16-AM-341    **MADE IN ITALY**

TECHNICAL SPECIFICATIONS

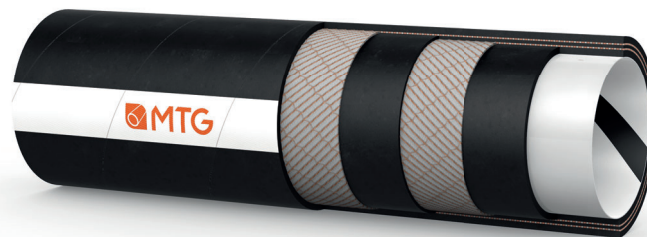
SIZE TOLERANCES: Inner diameter: EN 12115 - Outer diameter: EN 12115 - Length: ISO 1307

Inner Diameter mm	Outer diameter mm	Wall thickness mm	Working pressure BAR	Burst pressure BAR	Vacuum BAR	Min. bending radius mm	Approx. weight kg/m	Max. length m
19	31	6.0	16	64	-0.90	125	0.65	40
25	37	6.0	16	64	-0.90	150	0.75	40
32	44	6.0	16	64	-0.90	175	1.00	40
38	51	6.5	16	64	-0.90	225	1.30	40
50	66	8.0	16	64	-0.90	275	2.10	40
51	67	8.0	16	64	-0.90	275	2.15	40
63.5	79.5	8.0	16	64	-0.90	300	2.60	40
75	91	8.0	16	64	-0.90	350	3.10	40
76	92	8.0	16	48	-0.90	350	3.15	40
100	118	9.0	16	48	-0.90	450	4.90	40
102	120	9.0	16	48	-0.90	450	5.00	40

Chemical resistance acc. to MTG Chemical Resistance Chart. Above technical data are based on application at room temperature ($+20^\circ\text{C}$). Other sizes are available on request.


MANIFATTURA TUBI GOMMA S.p.A.

Grisignano di Zocco, 36040 (VI) ITALY
T. +39 0444.614755 | info@mtgspa.com
www.mtgspa.com



APPLICATION

- Multipurpose delivery hose for conveying a wide range of chemicals and foodstuffs.

CONSTRUCTION

TUBE

- UPE (Ultra High Molecular Weight Polyethylene), light colour, smooth, with black antistatic ($R \leq 10^6 \Omega$) helical UPE stripe.
- Compliance: FDA Standards, D.M. 21.03.73 and following amendments, Regulation EU n. 10/2011.

REINFORCEMENT

- High strength plies of synthetic cord.
- Copper wires on request.

COVER

- EPDM rubber (code 104N), black, antistatic ($R < 10^6 \Omega$), resistant to abrasion, ozone and weather, smooth, cloth finish.

SAFETY FACTOR

- ≥ 4 times working pressure.

STANDARDS

- Execution in accordance with EN 12115:2011.

TEMPERATURE RANGE

- In accordance with EN 12115:2011.
- Resistant to steam up to $+130^\circ\text{C}$ for max. 30 minutes.

ELECTRICAL PROPERTIES

- Electrical resistance through the hose wall: $R < 10^9 \Omega$.
- Identification symbol:
 - Ω/T for version without copper wires;
 - M/T for version with copper wires.

MARKING

- Embossed tape according to EN 12115:2011, lengthwise.

 **MANIPHARM UPE**    **MADE IN ITALY**

TECHNICAL SPECIFICATIONS

SIZE TOLERANCES: Inner diameter: EN 12115 - Outer diameter: EN 12115 - Length: ISO 1307

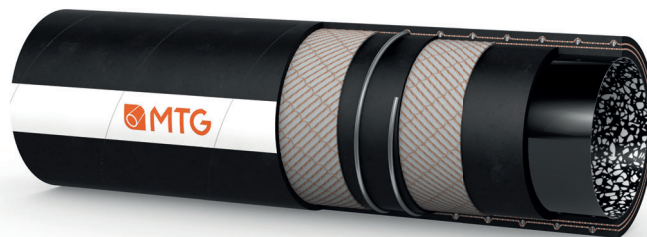
Inner Diameter mm	Outer diameter mm	Wall thickness mm	Working pressure BAR	Burst pressure BAR	Vacuum BAR	Min. bending radius mm	Approx. weight kg/m	Max. length m
13	23	5.0	16	64	-0.50	90	0.39	40
19	31	6.0	16	64	-0.50	125	0.55	40
25	37	6.0	16	64	-0.40	150	0.70	40
32	44	6.0	16	64	-0.40	175	0.85	40
38	51	6.5	16	64	-0.40	225	1.10	40
50	66	8.0	16	64	-0.30	275	1.70	40
51	67	8.0	16	64	-0.30	275	1.75	40
63.5	79.5	8.0	16	64	---	300*	2.10	40
75	91	8.0	16	64	---	350*	2.50	40
76	92	8.0	16	64	---	350*	2.55	40
100	116	8.0	16	64	---	450*	3.20	40
102	118	8.0	16	64	---	450*	3.25	40

(*) Bending radius to be reached at a pressure of ≥ 1 bar.
Chemical resistance acc. to MTG Chemical Resistance Chart.
Above technical data are based on application at room temperature ($+20^\circ\text{C}$). Other sizes are available on request.



MANIFATTURA TUBI GOMMA S.p.A.

Grisignano di Zocco, 36040 (VI) ITALY
T. +39 0444.614755 | info@mtgspa.com
www.mtgspa.com



APPLICATION

- Multipurpose suction and delivery hose for conveying a wide range of chemicals.
- Specifically developed to ensure dissipation of electrostatic charges not only on the surface, but also through the hose wall: electrical resistance through the hose wall: $R < 10^9$ Ohm.

CONSTRUCTION

TUBE

- UPE (Ultra High Molecular Weight Polyethylene), marble finish, patented, antistatic ($R < 10^6$ Ω), black and white, smooth.
- Compliance: FDA Standards, D.M. 21/03/73 and following amendments, Regulation EU n. 10/2011.

REINFORCEMENT

- High strength plies of synthetic cord.
- Embedded steel helix wire.
- Copper wires on request.

COVER

- EPDM rubber, black colour, antistatic ($R < 10^6$ Ω), smooth, resistant to abrasion, ozone and weather, cloth finish.

STANDARDS

- Execution complying with EN 12115: 2011 and EN 50014/IEC 60079-0.

ELECTRICAL PROPERTIES

- Identification symbol:
 - Ω /T for version without copper wires;
 - M/T for version with copper wires.

MAIN BENEFITS

- The marble finish with a low coefficient of friction facilitates transport of the product conveyed; also it allows a good resistance of the inner surface to contact with chemicals. It may easily be washed with the usual cleaning processes.

TEMPERATURE RANGE

- In accordance with EN 12115:2011.
- Resistance to steam up to +130°C for max. 30 minutes.

SAFETY FACTOR

- ≥ 4 times working pressure up to ID 76 mm.
- ≥ 3 times working pressure over ID 76 mm.

PATENTS

- E.P. 1580475.
- US P. 7,389,799.

MARKING

- Embossed tape according to EN 12115:2011, lengthwise.

MTG MANICHEM UPE - MARBLE

HOSE TESTED FOR USE IN ATEX ZONES
ATTESTATION NUMBER INERIS-DRA-20-200870-02408A

CERTIFICATIONS

- Hose approved by the Institute Ineris for use in Atex areas, attestation nr. INERIS-DRA-20-200870-02408A available up to DN 3".

TECHNICAL SPECIFICATIONS

SIZE TOLERANCES: I.D.: EN 12115 - O.D.: EN 12115 - Length: ISO 1307

Inner Diameter mm	Outer diameter mm	Wall thickness mm	Working pressure BAR	Burst pressure BAR	Vacuum BAR	Min. bending radius mm	Approx. weight kg/m	Max. length m
19	31	6.0	16	64	-0.9	125	0.65	40
25	37	6.0	16	64	-0.9	150	0.80	40
32	44	6.0	16	64	-0.9	175	1.00	40
38	51	6.5	16	64	-0.9	225	1.30	40
50	66	8.0	16	64	-0.9	275	2.15	40
51	67	8.0	16	64	-0.9	275	2.20	40
63.5	79.5	8.0	16	64	-0.9	300	2.60	40
75	91	8.0	16	64	-0.8	350	3.15	40
76	92	8.0	16	64	-0.8	350	3.20	40
100	118	9.0	16	48	-0.8	450	4.90	40
102	120	9.0	16	48	-0.8	450	5.00	40

Chemical resistance acc. to MTG Chemical Resistance Chart. Above technical data refer to application at room temperature (+20°C). Other sizes and colours are available upon request. Please contact our Sales Department.



Cod. IT-M00083

UPDATED: 09/22
Rev: 005

MANIFATTURA TUBI GOMMA S.p.A.

Grisignano di Zocco, 36040 (VI) ITALY
T. +39 0444.614755 | info@mtgspa.com
www.mtgspa.com



APPLICATION

- Multipurpose suction and delivery hose for handling solvents and chemicals with high concentration.

CONSTRUCTION

TUBE

- PFA (Perfluoralkoxy), white colour, fully fluorinated, mirror-smooth.
- Compliance: USP Class VI, 3-A Sanitary Standards n.20-27, FDA Standards, D.M. 21/03/73 and following amendments, Regulation EU n. 10/2011, ISO 10993-4, -10, -11, non-cytotoxic according to ISO 10993-Part 5.

REINFORCEMENT

- High strength plies of synthetic cord and embedded steel helix wire.
- Two copper wires are built in.

COVER

- EPDM rubber (code 104N), black colour, smooth, resistant to abrasion, ozone and weather, cloth finish.
- Antistatic in acc. with EN 12115:2011. Electric resistance $R < 10^6 \Omega$.

STANDARDS

- Execution in accordance with regulation EN 12115:2011.

ELECTRICAL PROPERTIES

- Identification symbol: M.
- Model without copper wires available upon request; identification symbol: Ω .

NOTE

- We suggest you to follow the instructions mentioned in the MTG "Use and maintenance guide for PFA/MFA hoses".

CERTIFICATIONS

- Hose approved by the Institute Ineris, attestation nr. INERIS-16-AM-343, for use in Atex areas.

MAIN BENEFITS

- The fluorinated inner liner ensures an excellent impermeability and resistance to oxidation, temperature and mechanical stress, thus avoiding cracks.
- Hose in accordance with EC 1935/2004 and 2023/2006/EC (GMP). The MTG production cycle is free from animal derived ingredients, phthalates, adipates and materials subject to restrictions acc. to EC 1907/2006 (REACH).

TEMPERATURE RANGE

- In accordance with EN 12115:2011.

STERILIZATION

- Steam disinfection, in an open circuit, up to +130°C for max. 30 minutes.

SAFETY FACTOR

- ≥ 4 times working pressure up to ID 75 mm.
- ≥ 3 times working pressure over ID 75 mm.

PATENTS

- E.P. 1450092.

MARKING

- Embossed tape according to EN 12115:2011, lengthwise.



TECHNICAL SPECIFICATIONS

SIZE TOLERANCES: I.D.: EN 12115 - O.D.: EN 12115 - Length: ISO 1307

Inner Diameter mm	Outer diameter mm	Wall thickness mm	Working pressure BAR	Burst pressure BAR	Vacuum BAR	Min. bending radius mm	Approx. weight kg/m	Max. length m
13	25	6.0	16	64	-0.9	90	0.55	20
19	32	6.5	16	64	-0.9	125	0.75	30
25	38	6.5	16	64	-0.9	150	0.95	30
32	45	6.5	16	64	-0.9	175	1.15	30
38	51	6.5	16	64	-0.9	225	1.50	30
51	66	7.5	16	64	-0.9	275	2.20	30
63.5	79.5	8.0	16	64	-0.9	300	3.00	20
76	93	8.5	16	48	-0.9	350	3.70	20
100	118	9.0	16	48	-0.9	500	5.00	20

Chemical resistance acc. to MTG Chemical Resistance Chart. Above technical data refer to application at room temperature (+20°C). Other sizes and colours are available upon request. Please contact our Sales Department.



Cod. IT-M00208

UPDATED: 03/19
Rev: 000

MANIFATTURA TUBI GOMMA S.p.A.

Grisignano di Zocco, 36040 (VI) ITALY
T. +39 0444.614755 | info@mtgspa.com
www.mtgspa.com



APPLICATION

- ALL-MARBLE versatile design: it efficiently combines food suitability and electrostatic dissipation in suction and discharge service.

CONSTRUCTION

TUBE

- UPE (Ultra High Molecular Weight Polyethylene), food approved, MARBLE finish, black/white, smooth, antistatic. Patented version EP 1580475 B1.
- Abrasion loss $\leq 10 \text{ mm}^3$ according to DIN 53516.

REINFORCEMENT

- Plies of high strength synthetic cord.
- Embedded steel helix wire.
- Copper wires upon on demand.

COVER

- UPE (Ultra High Molecular Weight Polyethylene), food approved, MARBLE finish, black/white, smooth, antistatic. Patented version EP 1580475 B1.
- Abrasion loss $\leq 10 \text{ mm}^3$ according to DIN 53516.

MAIN BENEFITS

- The special marble in-liner stands out against competition: it guarantees the electrostatic dissipation ALL OVER the surface in accordance with the safety parameters of the Ex-zones.
- The special marble model ensures the dissipation of electrostatic currents not only superficially but also through the hose wall.
- The tubing conforms to FDA food standards.
- The marble finish allows a low-friction rate during product transferring.

TEMPERATURE RANGE

- In accordance with EN 12115:2011.

SAFETY FACTOR

- ≥ 4 times working pressure up to ID 75 mm.
- ≥ 3 times working pressure over ID 75 mm.

MARKING

- Embossed tape according to EN 12115:2011, lengthwise.

MTG MANICHEM UPE ALL MARBLE

E-PATENT 1580475
U.S. 7,393,729

FDA

DM

EU

MADE IN ITALY

TECHNICAL SPECIFICATIONS

SIZE TOLERANCES: I.D.: EN 12115 - O.D.: EN 12115 - Length: ISO 1307

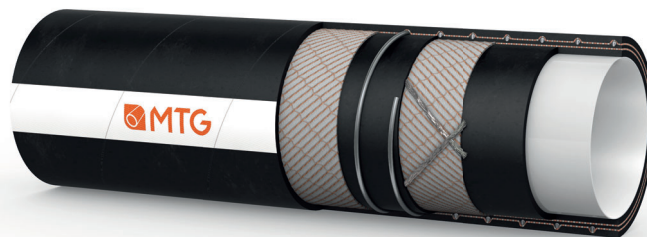
Inner Diameter mm	Outer diameter mm	Wall thickness mm	Working pressure BAR	Burst pressure BAR	Vacuum BAR	Min. bending radius mm	Approx. weight kg/m	Max. length m
19	31	6.0	16	64	-0.9	188	0.60	40
25	37	6.0	16	64	-0.9	225	0.75	40
32	44	6.0	16	64	-0.9	262	1.00	40
38	51	6.5	16	64	-0.9	338	1.30	40
50	66	8.0	16	64	-0.9	412	2.00	40
63.5	79.5	8.0	16	64	-0.9	450	2.70	40
75	91	8.0	16	48	-0.8	525	3.00	40
100	118	9.0	16	48	-0.8	675	4.90	40

Chemical resistance acc. to MTG Chemical Resistance Chart. Above technical data refer to application at room temperature (+20°C). Other sizes and colours are available upon request. Please contact our Sales Department.



MANIFATTURA TUBI GOMMA S.p.A.

Grisignano di Zocco, 36040 (VI) ITALY
T. +39 0444.614755 | info@mtgspa.com
www.mtgspa.com



APPLICATION

- Universal suction and delivery hose for conveying alcohols, acids, alkaline products, polar and non polar solvents and other aggressive chemicals.
- The chemical inertness and the high degree of impermeability of its FEP liner make it suitable for conveying a wide range of aggressive chemicals.
- Execution in accordance with regulation EN 12115:2011.

CONSTRUCTION

TUBE

- FEP (Fluorinated Ethylene Propylene) liner, light colour, smooth.
- Compliance: 3A Sanitary standards n.20-27, FDA Standards, USP Class VI and Regulation EU n. 10/2011.

REINFORCEMENT

- Synthetic textile plies.
- Embedded steel helix wire and two copper wires are built in.

COVER

- Synthetic rubber, black colour, antistatic ($R < 10^6 \Omega$), smooth, resistant to abrasion and weather, cloth finish.

MAIN BENEFITS

- Hose in accordance with EC 1935/2004 and 2023/2006/EC (GMP).
- The MTG production cycle is free from animal derived ingredients, phthalates, adipates and materials subject to restrictions acc. to EC 1907/2006 (REACH).

TEMPERATURE RANGE

- In accordance with EN 12115:2011.
- Peaks up to +130°C for sterilizations for max. 30 minutes.

SAFETY FACTOR

- ≥ 4 times working pressure up to ID 75 mm.
- ≥ 3 times working pressure over ID 75 mm.

ELECTRICAL PROPERTIES

- Identification symbol: M.
Model without copper wires available upon request; identification symbol: Ω .

MARKING

- Embossed tape according to EN 12115:2011, lengthwise.



TECHNICAL SPECIFICATIONS

SIZE TOLERANCES: I.D.: EN 12115 - O.D.: EN 12115 - Length: ISO 1307

Inner Diameter mm	Outer diameter mm	Wall thickness mm	Working pressure BAR	Burst pressure BAR	Vacuum BAR	Min. bending radius mm	Approx. weight kg/m	Max. length m
19	31	6.0	16	64	-0.9	125	0.75	30
25	37	6.0	16	64	-0.9	150	0.94	30
32	44	6.0	16	64	-0.9	175	1.10	30
38	51	6.5	16	64	-0.9	225	1.50	30
51	67	8.0	16	64	-0.9	275	2.40	30
63.5	79.5	8.0	16	64	-0.9	300	2.95	20
76	92	8.0	16	48	-0.9	350	3.60	20

Above technical data are referring to application at room temperature (+20°C).
Other sizes and colours are available upon request. Please contact our Sales Department



Cod. IT-M00264

UPDATED: 01/24
Rev: 000

MANIFATTURA TUBI GOMMA S.p.A.

Grisignano di Zocco, 36040 (VI) ITALY
T. +39 0444.614755 | info@mtgspa.com
www.mtgspa.com



APPLICATION

- Multipurpose suction and delivery hose for conveying a wide range of chemicals and food products.

CONSTRUCTION

TUBE

- UPE (Ultra High Molecular Weight Polyethylene), light colour, smooth, with black antistatic ($R \leq 10^6 \Omega$) helical UPE stripe.
- Compliance: FDA Standards, D.M. 21.03.73 and following amendments, Regulation EU n. 10/2011.

REINFORCEMENT

- High strength plies of synthetic cord.
- Embedded steel helix wire.
- Built-in copper wires on request.

COVER

- Marble finish, black and white colour, patented, antistatic ($R \leq 10^6 \Omega$), smooth, resistant to abrasion, ozone and weather.
- Compliance: FDA Standards for food application.

STANDARDS

- Execution in accordance with EN 12115:2011.

SAFETY FACTOR

- ≥ 4 times working pressure up to ID 75 mm.
- ≥ 3 times working pressure over ID 75 mm.

PATENT

- E.P. 1580475.

MAIN BENEFITS

- The marble finish, totally smooth and easily washable with most common cleaning products, withstands incidental contact even with aggressive chemicals conveyed in the hose.
- The special cover with a low coefficient of friction does not stain the contact surfaces; odourless and tasteless, it is suitable for application in pharma and food industries and generally in productions requiring the use of inert, contamination-free materials.
- Hose in accordance with EC 1935/2004 and 2023/2006/EC (GMP). The MTG production cycle is free from animal derived ingredients, phthalates, adipates and materials subject to restrictions acc. to EC 1907/2006 (REACH).

TEMPERATURE RANGE

- In accordance with EN 12115:2011.
- Resistant to steam up to $+130^\circ\text{C}$ for max. 30 minutes.

ELECTRICAL PROPERTIES

- Electrical resistance through the hose wall: $R < 10^9 \Omega$.
- Identification symbol:
 - Ω/T for version without copper wires;
 - M/T for version with copper wires.

MARKING

- Embossed tape according to EN 12115:2011, lengthwise.



TECHNICAL SPECIFICATIONS

SIZE TOLERANCES: Inner diameter: EN 12115 - Outer diameter: EN 12115 - Length: ISO 1307

Inner Diameter mm	Outer diameter mm	Wall thickness mm	Working pressure BAR	Burst pressure BAR	Vacuum BAR	Min. bending radius mm	Approx. weight kg/m	Max. length m
19	31	6.0	16	64	-0.90	125	0.65	40
25	37	6.0	16	64	-0.90	150	0.75	40
32	44	6.0	16	64	-0.90	175	1.00	40
38	51	6.5	16	64	-0.90	225	1.30	40
50	66	8.0	16	64	-0.90	275	2.10	40
51	67	8.0	16	64	-0.90	275	2.15	40
63.5	79.5	8.0	16	64	-0.90	300	2.60	40
75	91	8.0	16	64	-0.90	350	3.10	40
76	92	8.0	16	48	-0.90	350	3.15	40
100	118	9.0	16	48	-0.90	450	4.90	40
102	120	9.0	16	48	-0.90	450	5.00	40

Chemical resistance acc. to MTG Chemical Resistance Chart. Above technical data are based on application at room temperature ($+20^\circ\text{C}$). Other sizes are available on request.

MANIFATTURA TUBI GOMMA S.p.A.

Grisignano di Zocco, 36040 (VI) ITALY
T. +39 0444.614755 | info@mtgspa.com
www.mtgspa.com



APPLICATION

- Multipurpose suction and delivery hose for conveying a wide range of chemicals and foodstuff.

CONSTRUCTION

TUBE

- UPE (Ultra High Molecular Weight Polyethylene), light colour, smooth, with black antistatic ($R \leq 10^6 \Omega$) helical UPE stripe.
- Compliance: BfR, FDA Standards, D.M. 21.03.73 and following amendments, Regulation EU n. 10/2011.

REINFORCEMENT

- High strength plies of synthetic cord.
- Embedded steel helix wire.
- Built-in copper wires on request.

COVER

- EPDM rubber (code 104N), black, antistatic ($R < 10^6 \Omega$), resistant to abrasion, ozone and weather, corrugated, cloth finish.

STANDARDS

- Execution in accordance with EN 12115:2011.

SAFETY FACTOR

- ≥ 4 times working pressure.

MAIN BENEFITS

- Flexible and lightweight structure designed for applications where reduced bending radii and ease of handling are requested.

TEMPERATURE RANGE

- From -35°C to $+100^\circ\text{C}$.
- Resistant to steam up to $+130^\circ\text{C}$ for max. 30 minutes.

ELECTRICAL PROPERTIES

- Electrical resistance through the hose wall: $R < 10^9 \Omega$.
- Identification symbol:
 - Ω/T for version without copper wires;
 - M/T for version with copper wires.

MARKING

- Embossed tape according to EN 12115:2011, lengthwise.



TECHNICAL SPECIFICATIONS

SIZE TOLERANCES: Inner diameter: EN 12115 - Outer diameter: EN 12115 - Length: ISO 1307

Inner Diameter mm	Outer diameter mm	Wall thickness mm	Working pressure BAR	Burst pressure BAR	Vacuum BAR	Min. bending radius mm	Approx. weight kg/m	Max. length m
19	31	6.0	10	40	-0.90	125	0.65	40
25	37	6.0	10	40	-0.90	150	0.80	40
32	44	6.0	10	40	-0.90	175	1.10	40
38	51	6.5	10	40	-0.90	225	1.20	40
50	66	8.0	10	40	-0.90	275	1.90	40
63.5	79.5	8.0	10	40	-0.90	300	2.30	40
75	91	8.0	10	40	-0.80	350	2.80	40
100	118	9.0	10	40	-0.80	450	4.50	40

Chemical resistance acc. to MTG Chemical Resistance Chart. Above technical data are based on application at room temperature ($+20^\circ\text{C}$). Other sizes are available on request.



MANIFATTURA TUBI GOMMA S.p.A.

Grisignano di Zocco, 36040 (VI) ITALY
T. +39 0444.614755 | info@mtgspa.com
www.mtgspa.com



APPLICATION

- Multipurpose suction and delivery hose for conveying a wide range of aggressive chemicals.
- Engineered to ensure dissipation of electrostatic charges not only on the surface, but also through the hose wall (Electrical resistance: $R < 10^9 \Omega$).

CONSTRUCTION

TUBE

- UPE (Ultra High Molecular Weight Polyethylene), antistatic ($R < 10^6 \Omega$), black and white, smooth.
- Compliance: FDA Standards, Regulation EU n. 10/2011.

REINFORCEMENT

- High strength plies of synthetic cord.
- Embedded steel helix wires.
- Copper wires on request.

COVER

- EPDM rubber, black, antistatic ($R < 10^6 \Omega$), resistant to abrasion, ozone and weather, wide corrugated, cloth finish.

STANDARDS

- Execution in accordance with EN 12115:2011.

TEMPERATURE RANGE

- In accordance with EN 12115:2011.
- Resistant to steam up to $+130^\circ\text{C}$ for max. 30 minutes.

SAFETY FACTOR

- ≥ 4 times working pressure.

ELECTRICAL PROPERTIES

- Electrical resistance through the hose wall: $R < 10^9 \Omega$.
- Identification symbol:
 - Ω/T for version without copper wires;
 - M/T for version with copper wires.

NOTE

- The wide corrugation of the outer surface allows an easy and safe installation of the fittings (no cuffs needed).

MARKING

- Embossed tape according to EN 12115:2011, lengthwise.

 **MANICHEM UPE** **MADE IN ITALY**

TECHNICAL SPECIFICATIONS

SIZE TOLERANCES: Inner diameter: EN 12115 - Outer diameter: EN 12115 - Length: ISO 1307

Inner Diameter mm	Outer diameter mm	Wall thickness mm	Working pressure BAR	Burst pressure BAR	Vacuum BAR	Min. bending radius mm	Approx. weight kg/m	Max. length m
19	31	6.0	10	40	-0.90	125	0.65	40
25	37	6.0	10	40	-0.90	150	0.80	40
32	44	6.0	10	40	-0.90	175	0.95	40
38	51	6.5	10	40	-0.90	225	1.20	40
50	66	8.0	10	40	-0.90	275	1.90	40
63.5	79.5	8.0	10	40	-0.90	300	2.60	40
75	91	8.0	10	40	-0.80	350	3.00	40
100	116	8.0	10	40	-0.80	450	4.10	40

Chemical resistance acc. to MTG Chemical Resistance Chart. Above technical data are based on application at room temperature ($+20^\circ\text{C}$). Other sizes are available on request.



MANIFATTURA TUBI GOMMA S.p.A.

Grisignano di Zocco, 36040 (VI) ITALY
T. +39 0444.614755 | info@mtgspa.com
www.mtgspa.com



APPLICATION

- Rubber hose for loading and unloading tar, bitumen and asphalt.
- Normally used on tank trucks.

CONSTRUCTION

TUBE

- Visible steel helix wire (partly embedded), rubberized insulating fabric, rubber resistant to bitumen, semi-corrugated.

REINFORCEMENT

- High strength plies of synthetic cord.
- Embedded steel helix wire.

COVER

- Synthetic rubber, black, resistant to oil, abrasion, ozone and weather, corrugated, cloth finish.

TEMPERATURE RANGE

- From -15°C to +180°C.
- Peaks up to +200°C.

SAFETY FACTOR

- ≥ 5 times working pressure.

NOTE

- It is only supplied in service lengths, with cuffs at the ends.

MARKING

MTG HOT-TAR MADE IN ITALY

TECHNICAL SPECIFICATIONS

SIZE TOLERANCES: Inner diameter: ISO 1307 - Wall thickness: DIN 7715 T4 S2 - Length: ISO 1307

Inner Diameter mm	Outer diameter mm	Wall thickness mm	Working pressure BAR	Burst pressure BAR	Vacuum BAR	Min. bending radius mm	Approx. weight kg/m	Max. length m
50	70	10.0	4	20	-0.90	250	2.70	12
65	87	11.0	4	20	-0.90	325	3.90	12
76	100	12.0	4	20	-0.90	375	5.00	12
80	104	12.0	4	20	-0.90	400	5.20	12
90	114	12.0	4	20	-0.90	450	6.20	12
100	124	12.0	4	20	-0.90	500	6.90	12

Chemical resistance acc. to MTG Chemical Resistance Chart. Other sizes are available upon request.
Above technical data are based on application at room temperature (+20°C).

Cod. IT-B00003

UPDATED: 04/18
Rev: 002



MANIFATTURA TUBI GOMMA S.p.A.

Grisignano di Zocco, 36040 (VI) ITALY
T. +39 0444.614755 | info@mtgspa.com
www.mtgspa.com



APPLICATION

- Suction and delivery hose for handling aviation fuels.
- Specifically designed for conveying kerosene and hydrocarbons with an aromatic content up to 50%.
- Suitable for use on tank truck reels.

CONSTRUCTION

TUBE

- NBR rubber, black colour, antistatic, smooth.

REINFORCEMENT

- High strength plies of synthetic cord.
- Embedded steel helix wire.
- Built-in copper wires.

COVER

- CR rubber, black colour, conductive, self-extinguishing, resistant to abrasion, weather and contact with hydrocarbons, smooth, cloth finish.

STANDARDS

- Execution according to the aviation fuel Standards EN 1825 (Type E), EN 1361, BS 3158, EI 1529.

TEMPERATURE RANGE

- In accordance with EN 1825.
- For other fluids please refer to the MTG Chemical Resistance Chart.

SAFETY FACTOR

- ≥ 4 times working pressure.

ELECTRICAL PROPERTIES

- Identification symbol: M (Resistance : $R < 10^2 \Omega$).

NOTE

- If required, it may be supplied in service lengths with couplings at the ends and with hydrostatic test certificate.

MARKING

- Embossed tape according to EN 1825 (Type E) - EN 1361 - BS 3158 - EI 1529, lengthwise.

MTG MANITANK AVIO MADE IN ITALY

TECHNICAL SPECIFICATIONS

SIZE TOLERANCES: Inner diameter: EN 1825 - Outer diameter: DIN 7715 T4 S2 - Length: EN 1825

Inner Diameter mm	Outer diameter mm	Wall thickness mm	Working pressure BAR	Burst pressure BAR	Vacuum BAR	Min. bending radius mm	Approx. weight kg/m	Min. DN Reel mm	Max. length m
19	31	6.0	20	80	-0.90	100	0.80	225	40
25	38.5	6.75	20	80	-0.90	125	1.00	300	40
32	46	7.0	20	80	-0.90	140	1.45	375	40
38	52	7.0	20	80	-0.90	180	1.68	450	40
50	65	7.5	20	80	-0.90	215	2.05	550	40
51	66	7.5	20	80	-0.90	215	2.10	550	40
63.5	81.5	9.0	20	80	-0.90	250	3.00	600	40
75	93.5	9.25	20	80	-0.90	250	4.40	600	40
76	94.5	9.25	20	80	-0.90	250	4.45	600	40
100	120	10.0	20	80	-0.90	350	4.50	900	40
102	122	10.0	20	80	-0.90	350	4.60	900	40

Chemical resistance acc. to MTG Chemical Resistance Chart.

Above technical data are based on application at room temperature (+20°C). Other sizes are available on request.

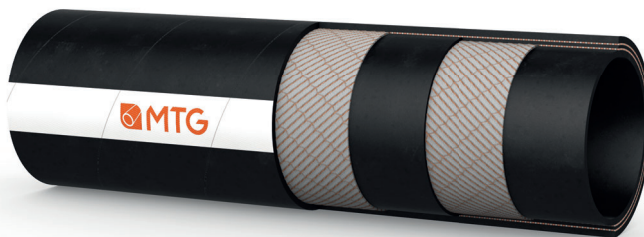
Cod. IT-M00023

UPDATED: 10/18

Rev: 004

MANIFATTURA TUBI GOMMA S.p.A.

Grisignano di Zocco, 36040 (VI) ITALY
T. +39 0444.614755 | info@mtgspa.com
www.mtgspa.com



APPLICATION

- Delivery hose for handling aviation fuels.
- Specifically designed for conveying kerosene and hydrocarbons with an aromatic content up to 50%.
- Suitable for use on tank truck reels.

CONSTRUCTION

TUBE

- NBR rubber, black colour, antistatic, smooth.

REINFORCEMENT

- High strength plies of synthetic cord.
- Built-in copper wires only for type B.

COVER

- CR rubber, black colour, antistatic, self-extinguishing, resistant to abrasion, weather and contact with hydrocarbons, smooth, cloth finish.

STANDARDS

- Execution according to the aviation fuel Standards EN 1825, EN 1361, BS 3158, EI 1529.

SAFETY FACTOR

- ≥ 4 times working pressure.

TEMPERATURE RANGE

- In accordance with EN 1825.
- For other fluids please refer to the MTG Chemical Resistance Chart.

ELECTRICAL PROPERTIES

- Identification symbol:
- Ω for Type C (Resistance: $10^3 \Omega < R < 10^6 \Omega$).
- M for Type B (Resistance: $R < 10^2 \Omega$).

NOTE

- If required, it may be supplied in service lengths with couplings at the ends and with hydrostatic test certificate.

MARKING

- Embossed tape according to EN 1825:2011, EN 1361 - BS 3158 - EI 1529, lengthwise (Type B and type C available).

MTG MANITANK AVIO MADE IN ITALY

TECHNICAL SPECIFICATIONS

SIZE TOLERANCES: Inner diameter: EN 1825 - Outer diameter: DIN 7715 T4 S2 - Length: EN 1825

Inner Diameter mm	Outer diameter mm	Wall thickness mm	Working pressure BAR	Burst pressure BAR	Vacuum BAR	Min. bending radius mm	Approx. weight kg/m	Min. DN Reel mm	Max. length m
19	31	6.0	20	80	-0.50	100	0.70	225	40
25	38.5	6.75	20	80	-0.40	125	0.98	300	40
32	46	7.0	20	80	-0.40	140	1.20	375	40
38	52	7.0	20	80	-0.40	180	1.35	450	40
50	65	7.5	20	80	-0.30	215	1.80	550	40
51	66	7.5	20	80	---	215	1.85	550	40
63.5	81	8.75	20	80	---	230	2.75	600	40
75	93.5	9.25	20	80	---	230	3.40	600	40
76	94.5	9.25	20	80	---	230	3.45	600	40
100	122	11.0	20	80	---	345	4.40	900	40
102	124	11.0	20	80	---	345	4.50	900	40

Chemical resistance acc. to MTG Chemical Resistance Chart.

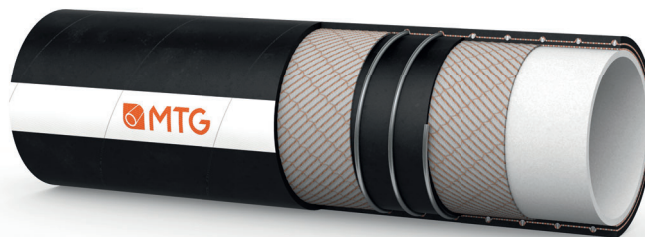
Above technical data are based on application at room temperature (+20°C). Other sizes are available on request.

Cod. IT-M00019

UPDATED: 10/18
Rev: 004


MANIFATTURA TUBI GOMMA S.p.A.

Grisignano di Zocco, 36040 (VI) ITALY
T. +39 0444.614755 | info@mtgspa.com
www.mtgspa.com



APPLICATION

- Rubber hose for suction and delivery of hydrocarbon solvents with an aromatic content up to 70%.
- Suitable for conveying petrol, diesel, biodiesel blends including B100 and ethanol based fuels.

CONSTRUCTION

TUBE

- NBR2 rubber, light colour, smooth.

REINFORCEMENT

- High strength plies of synthetic cord.
- Embedded steel helix wire.
- Copper wires on request.

COVER

- NBR rubber, black colour, antistatic ($R < 10^6 \Omega$), smooth, cloth finish.
- Resistant to abrasion, ozone, weather, fats and mineral oils.

STANDARDS

- Execution in accordance with EN 12115:2011.

TEMPERATURE RANGE

- In accordance with EN 12115:2011.
- Peaks up to +90°C depending on the fluids conveyed.

ELECTRICAL PROPERTIES

- Identification symbol:
 - Ω for version without copper wires;
 - M for version with copper wires.

SAFETY FACTOR

- ≥ 4 times working pressure up to ID 75 mm.
- ≥ 3 times working pressure over ID 75 mm.

MARKING

- Embossed tape according to EN 12115:2011, lengthwise.



TECHNICAL SPECIFICATIONS

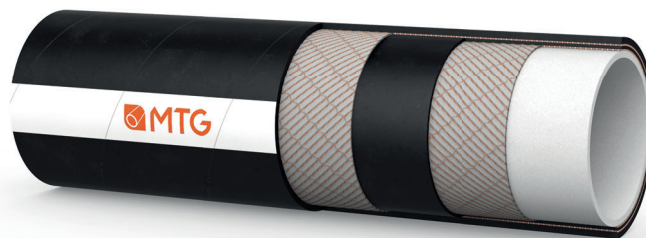
SIZE TOLERANCES: Inner diameter: EN 12115 - Outer diameter: EN 12115 - Length: ISO 1307

Inner Diameter mm	Outer diameter mm	Wall thickness mm	Working pressure BAR	Burst pressure BAR	Vacuum BAR	Min. bending radius mm	Approx. weight kg/m	Max. length m
19	31	6.0	16	64	-0.90	125	0.62	40
25	37	6.0	16	64	-0.90	150	0.87	40
32	44	6.0	16	64	-0.90	175	1.00	40
38	51	6.5	16	64	-0.90	225	1.40	40
50	66	8.0	16	64	-0.90	275	2.00	40
51	67	8.0	16	64	-0.90	275	2.05	40
63.5	79.5	8.0	16	64	-0.90	300	2.80	40
75	91	8.0	16	64	-0.90	350	3.40	40
76	92	8.0	16	48	-0.90	350	3.45	40
100	118	9.0	16	48	-0.90	450	5.00	40
102	120	9.0	16	48	-0.90	450	5.10	40

Chemical resistance acc. to MTG Chemical Resistance Chart. Above technical data are based on application at room temperature (+20°C). Other sizes are available on request.


MANIFATTURA TUBI GOMMA S.p.A.

Grisignano di Zocco, 36040 (VI) ITALY
T. +39 0444.614755 | info@mtgspa.com
www.mtgspa.com



APPLICATION

- Rubber hose for delivery of hydrocarbon solvents with an aromatic content up to 70%.
- Suitable for conveying petrol, diesel, biodiesel blends including B100 and ethanol based fuels.

CONSTRUCTION

TUBE

- NBR2 rubber, light colour, smooth.

REINFORCEMENT

- High strength plies of synthetic cord.
- Copper wires on request.

COVER

- NBR rubber, black colour, antistatic ($R < 10^6 \Omega$), smooth, cloth finish.
- Resistant to abrasion, ozone, weather, fats and mineral oils.

STANDARDS

- Execution in accordance with EN 12115:2011.

TEMPERATURE RANGE

- In accordance with EN 12115:2011.
- Peaks up to +90°C depending on the fluids conveyed.

ELECTRICAL PROPERTIES

- Identification symbol:
 - Ω for version without copper wires;
 - M for version with copper wires.

SAFETY FACTOR

- ≥ 4 times working pressure.

MARKING

- Embossed tape according to EN 12115:2011, lengthwise.

 **MANISOLV NBR2** **MADE IN ITALY**

TECHNICAL SPECIFICATIONS

SIZE TOLERANCES: Inner diameter: EN 12115 - Outer diameter: EN 12115 - Length: ISO 1307

Inner Diameter mm	Outer diameter mm	Wall thickness mm	Working pressure BAR	Burst pressure BAR	Vacuum BAR	Min. bending radius mm	Approx. weight kg/m	Max. length m
13	23	5.0	16	64	-0.50	90	0.42	40
19	31	6.0	16	64	-0.50	125	0.66	40
25	37	6.0	16	64	-0.40	150	0.82	40
32	44	6.0	16	64	-0.40	175	1.00	40
38	51	6.5	16	64	-0.40	225	1.20	40
50	66	8.0	16	64	-0.30	275	1.95	40
51	67	8.0	16	64	-0.30	275	2.00	40
63.5	79.5	8.0	16	64	---	300	2.30	40
75	91	8.0	16	64	---	350*	2.70	40
76	92	8.0	16	64	---	350*	2.75	40
100	116	8.0	16	64	---	450*	3.50	40
102	118	8.0	16	64	---	450*	3.55	40

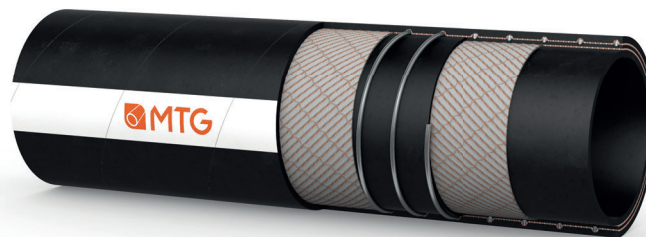
(*) The bending radius can be reached at a pressure of ≥ 1 bar.

Chemical resistance acc. to MTG Chemical Resistance Chart. Above technical data are based on application at room temperature (+20°C). Other sizes are available on request.



MANIFATTURA TUBI GOMMA S.p.A.

Grisignano di Zocco, 36040 (VI) ITALY
T. +39 0444.614755 | info@mtgspa.com
www.mtgspa.com



APPLICATION

- Suction and delivery hose suitable for hydrocarbons with an aromatic content up to 50%.
- Excellent for use on tank trucks, rail tanks and processing plants in the oil industry.
- Suitable for conveying petrol, diesel, biodiesel blends including B100 and fuels based on ethanol.

CONSTRUCTION

TUBE

- NBR1 rubber (code UNI E), black colour, antistatic ($R < 10^6 \Omega$), smooth.

REINFORCEMENT

- High strength plies of synthetic cord.
- Embedded steel helix wires.
- Built-in copper wire upon request.

COVER

- NBR rubber (code 5600 DIN), black colour, antistatic ($R < 10^6 \Omega$), smooth, cloth finish.
- Resistant to abrasion, ozone, weather, fats and mineral oils.

STANDARDS

- Execution in accordance with EN 12115:2011.

TEMPERATURE RANGE

- In accordance with EN 12115:2011.

SAFETY FACTOR

- ≥ 4 times working pressure up to ID 75 mm.
- ≥ 3 times working pressure over ID 75 mm.

ELECTRICAL PROPERTIES

- Electrical resistance through the hose wall: $R < 10^9 \Omega$.
- Identification symbol:
 - Ω/T for version without copper wires;
 - M/T for version with copper wires.

MARKING

- Embossed tape according to EN 12115:2011, lengthwise.

MTG MANITANK NBR1 MADE IN ITALY

TECHNICAL SPECIFICATION

SIZE TOLERANCES: Inner Diameter: EN 12115 - Outer diameter: EN 12115 - Length: ISO 1307

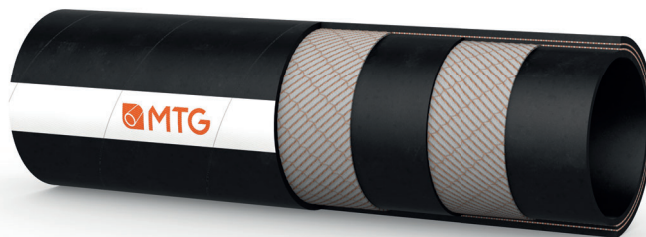
Inner Diameter mm	Outer diameter mm	Wall thickness mm	Working pressure BAR	Burst pressure BAR	Vacuum BAR	Min. bending radius mm	Approx. weight kg/m	Max. length m
19	31	6.0	16	64	-0.90	125	0.70	40
25	37	6.0	16	64	-0.90	150	0.85	40
32	44	6.0	16	64	-0.90	175	1.00	40
38	51	6.5	16	64	-0.90	225	1.35	40
50	66	8.0	16	64	-0.90	275	2.10	40
63.5	79.5	8.0	16	64	-0.90	300	2.80	40
75	91	8.0	16	64	-0.90	350	3.30	40
100	118	9.0	16	48	-0.90	450	4.95	40

Chemical resistance acc. to MTG Chemical Resistance Chart.

Other sizes are available upon request. Above technical data are referring to application at room temperature (+20°C).


MANIFATTURA TUBI GOMMA S.p.A.

Grisignano di Zocco, 36040 (VI) ITALY
T. +39 0444.614755 | info@mtgspa.com
www.mtgspa.com



APPLICATION

- Delivery hose suitable for hydrocarbons with an aromatic content up to 50%.
- Excellent for use on tank trucks, rail tanks and processing plants in the oil industry.
- Suitable for conveying petrol, diesel, biodiesel blends including B100 and fuels based on ethanol.

CONSTRUCTION

TUBE

- NBR1 rubber (code UNI E), black colour, antistatic ($R < 10^6 \Omega$), smooth.

REINFORCEMENT

- High strength plies of synthetic cord.
- Built-in copper wires upon request.

COVER

- NBR rubber (code 5600 DIN), black colour, antistatic ($R < 10^6 \Omega$), smooth, cloth finish.
- Resistant to abrasion, ozone, weather, fats and mineral oils.

STANDARDS

- Execution in accordance with EN 12115:2011.

TEMPERATURE RANGE

- In accordance with EN 12115:2011.

SAFETY FACTOR

- ≥ 4 times working pressure.

ELECTRICAL PROPERTIES

- Electrical resistance through the hose wall: $R < 10^9 \Omega$.
- Identification symbol:
 - Ω/T for version without copper wires;
 - M/T for version with copper wires.

MARKING

- Embossed tape according to EN 12115:2011, lengthwise.

MTG MANITANK NBR1 MADE IN ITALY

TECHNICAL SPECIFICATIONS

SIZE TOLERANCES: Inner Diameter: EN 12115 - Outer diameter: EN 12115 - Length: ISO 1307

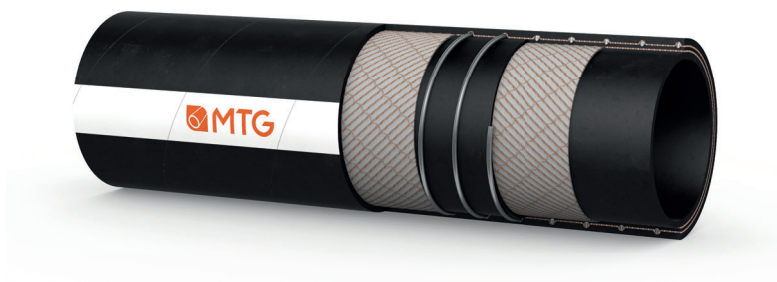
Inner Diameter mm	Outer diameter mm	Wall thickness mm	Working pressure BAR	Burst pressure BAR	Vacuum BAR	Min. bending radius mm	Approx. weight kg/m	Max. length m
13	23	5.0	16	64	-0.5	90	0.45	40
19	31	6.0	16	64	-0.5	125	0.65	40
25	37	6.0	16	64	-0.4	150	0.75	40
32	44	6.0	16	64	-0.4	175	0.90	40
38	51	6.5	16	64	-0.4	225	1.10	40
50	66	8.0	16	64	-0.3	275	1.80	40
63.5	79.5	8.0	16	64	---	300*	2.20	40
75	91	8.0	16	64	---	350*	3.00	40
100	116	8.0	16	64	---	450*	3.90	40

(*) Bending radius to be reached at a pressure of ≥ 1 bar. Chemical resistance acc. to MTG Chemical Resistance Chart.

Above technical data refer to application at room temperature (+20°C). Other sizes and colours are available upon request. Please contact our Sales Department.

MANIFATTURA TUBI GOMMA S.p.A.

Grisignano di Zocco, 36040 (VI) ITALY
T. +39 0444.614755 | info@mtgspa.com
www.mtgspa.com



APPLICATION

- Suction and delivery hose for conveying aggressive chemicals.

CONSTRUCTION

TUBE

- EPM rubber, black, smooth.
- Resistance: according to the MTG Chemical Resistance Chart.

REINFORCEMENT

- Plies of synthetic cord.
- Embedded steel helix wire.
- Copper wires on demand.

COVER

- EPDM rubber, black, smooth, antistatic ($R < 10^6 \Omega$), resistant to abrasion, ozone and weather, cloth finish.

TEMPERATURE RANGE

- From -40°C to $+100^{\circ}\text{C}$.
- Resistant to steam up to $+130^{\circ}\text{C}$ for max. 30 minutes.

SAFETY FACTOR

- ≥ 3 times working pressure.

MARKING

MTG FERRARA EPM $R < 10^6 \Omega$ **MADE IN ITALY**

TECHNICAL SPECIFICATIONS

SIZE TOLERANCES: I.D.: ISO 1307 - Wall thickness: DIN 7715 T4 S2 - Length: ISO 1307

Inner Diameter mm	Outer diameter mm	Wall thickness mm	Working pressure BAR	Burst pressure BAR	Vacuum BAR	Min. bending radius mm	Approx. weight kg/m	Max. length m
13	23	5.0	10	30	-0.90	65	0.38	40
16	26	5.0	10	30	-0.90	80	0.47	40
19	30	5.5	10	30	-0.90	100	0.60	40
25	37	6.0	10	30	-0.90	125	0.76	40
32	44	6.0	10	30	-0.90	160	0.96	40
38	51	6.5	10	30	-0.90	200	1.28	40
45	59	7.0	10	30	-0.90	230	1.56	40
50	64	7.0	10	30	-0.90	250	1.70	40
60	75	7.5	10	30	-0.90	300	2.23	40
63.5	78.5	7.5	10	30	-0.90	325	2.34	40
70	86	8.0	10	30	-0.90	350	2.82	40
75	91	8.0	10	30	-0.90	400	3.00	40
80	96	8.0	10	30	-0.90	430	3.17	40
90	106	8.0	10	30	-0.90	500	3.60	40
100	116	8.0	10	30	-0.90	550	4.18	40
102	118	8.0	10	30	-0.90	550	4.26	40
125	145	10.0	10	30	-0.80	750	6.30	40
150	172	11.0	10	30	-0.80	900	8.70	20
152	174	11.0	10	30	-0.80	900	8.80	20
203	227	12.0	10	30	-0.80	1400	13.70	12

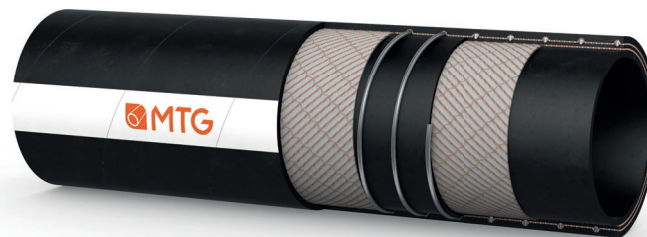
Other sizes are available upon request. Above technical data are referring to application at room temperature ($+20^{\circ}\text{C}$).

Cod. IT-F000011

UPDATED: 04/18
Rev: 000

MANIFATTURA TUBI GOMMA S.p.A.

Grisignano di Zocco, 36040 (VI) ITALY
T. +39 0444.614755 | info@mtgspa.com
www.mtgspa.com



APPLICATION

- Suction and delivery hose for conveying chemicals with high concentration.

CONSTRUCTION

TUBE

- EPM rubber (code 660N), antistatic ($R < 10^6 \Omega$), black colour, smooth, free from nitrosamines.

REINFORCEMENT

- High strength plies of synthetic cord.
- Embedded steel helix wire.
- Built-in copper wires on request.

COVER

- EPDM rubber (code 104N), black, antistatic ($R < 10^6 \Omega$), resistant to abrasion, ozone and weather, smooth, cloth finish.

STANDARDS

- Execution in accordance with EN 12115:2011.

SAFETY FACTOR

- ≥ 4 times working pressure up to ID 75 mm.
- ≥ 3 times working pressure over ID 75 mm.

MAIN BENEFITS

- EPM (ethylene-propylene) is a synthetic rubber similar to EPDM, but with a better performance.
- EPM provides higher resistance to oxidizing acids.
- EPM provides a better chemical resistance to high temperatures: when conveying acetone, alcohol, ester and acids, it is more resistant to the fluids thanks to its impermeable inner tube and compact structure.
- EPM offers better compression set values, thus making the assembly

TEMPERATURE RANGE

- In accordance with EN 12115:2011.
- Resistant to steam up to +130°C for max. 30 minutes.

ELECTRICAL PROPERTIES

- Identification symbol:
 - Ω/T for version without copper wires;
 - M/T for version with copper wires.

MARKING

- Embossed tape according to EN 12115:2011, lengthwise.

 **MANICHEM EPM** MADE IN ITALY

TECHNICAL SPECIFICATIONS

SIZE TOLERANCES: Inner diameter: EN 12115 - Outer diameter: EN 12115 - Length: ISO 1307

Inner Diameter mm	Outer diameter mm	Wall thickness mm	Working pressure BAR	Burst pressure BAR	Vacuum BAR	Min. bending radius mm	Approx. weight kg/m	Max. length m
19	31	6.0	16	64	-0.90	125	0.70	40
25	37	6.0	16	64	-0.90	150	0.80	40
32	44	6.0	16	64	-0.90	175	1.00	40
38	51	6.5	16	64	-0.90	225	1.26	40
50	66	8.0	16	64	-0.90	275	2.10	40
51	67	8.0	16	64	-0.90	275	2.15	40
63.5	79.5	8.0	16	64	-0.90	300	2.60	40
75	91	8.0	16	64	-0.80	350	3.05	40
76	92	8.0	16	48	-0.80	350	3.10	40
100	118	9.0	16	48	-0.80	450	4.95	40
102	120	9.0	16	48	-0.80	450	5.00	40

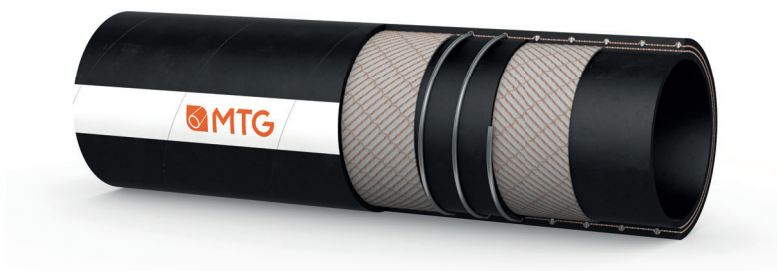
Chemical resistance acc. to MTG Chemical Resistance Chart. Above technical data are based on application at room temperature (+20°C). Other sizes are available on request.

Cod. IT-M00104

UPDATED: 04/18
Rev: 002

MANIFATTURA TUBI GOMMA S.p.A.

Grisignano di Zocco, 36040 (VI) ITALY
T. +39 0444.614755 | info@mtgspa.com
www.mtgspa.com



APPLICATION

- Suction and delivery hose for conveying a wide range of chemicals with medium or low concentration.

CONSTRUCTION

TUBE

- EPDM rubber (code 104N), black colour, antistatic ($R < 10^6 \Omega$), smooth.
- Resistance: according to MTG Chemical Resistance Chart.

REINFORCEMENT

- High strength plies of synthetic cord.
- Embedded steel helix wire.

COVER

- EPDM rubber (code 104N), black, antistatic ($R < 10^6 \Omega$), resistant to abrasion, ozone and weather, smooth, cloth finish.

STANDARDS

- Execution in accordance with EN 12115:2011.

TEMPERATURE RANGE

- In accordance with EN 12115:2011.
- Resistant to steam up to +130°C for max. 30 minutes.

SAFETY FACTOR

- ≥ 4 times working pressure up to ID 75 mm.
- ≥ 3 times working pressure over ID 75 mm.

ELECTRICAL PROPERTIES

- Electrical resistance through the hose wall: $R < 10^9 \Omega$.
- Identification symbol:
 - Ω/T for version without copper wires;
 - M/T for version with copper wires.

MARKING

- Embossed tape according to EN 12115:2011, lengthwise.



TECHNICAL SPECIFICATIONS

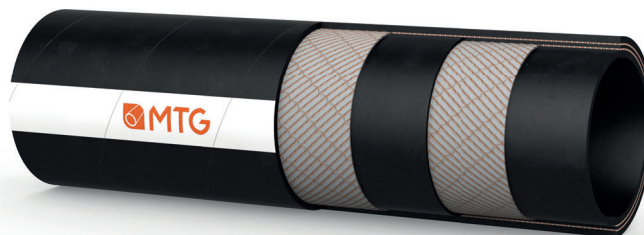
SIZE TOLERANCES: Inner diameter: EN 12115 - Outer diameter: EN 12115 - Length: ISO 1307

Inner Diameter mm	Outer diameter mm	Wall thickness mm	Working pressure BAR	Burst pressure BAR	Vacuum BAR	Min. bending radius mm	Approx. weight kg/m	Max. length m
19	31	6.0	16	64	-0.90	125	0.65	40
25	37	6.0	16	64	-0.90	150	0.80	40
32	44	6.0	16	64	-0.90	175	1.00	40
38	51	6.5	16	64	-0.90	225	1.30	40
50	66	8.0	16	64	-0.90	275	1.80	40
51	67	8.0	16	64	-0.90	275	1.85	40
63.5	79.5	8.0	16	64	-0.90	300	2.70	40
75	91	8.0	16	64	-0.90	350	3.00	40
76	92	8.0	16	48	-0.90	350	3.05	40
100	118	9.0	16	48	-0.90	450	4.90	40
102	120	9.0	16	48	-0.90	450	5.00	40

Chemical resistance acc. to MTG Chemical Resistance Chart. Above technical data are based on application at room temperature (+20°C). Other sizes are available on request.


MANIFATTURA TUBI GOMMA S.p.A.

Grisignano di Zocco, 36040 (VI) ITALY
T. +39 0444.614755 | info@mtgspa.com
www.mtgspa.com



APPLICATION

- Delivery hose for conveying a wide range of chemicals with medium or low concentration.

CONSTRUCTION

TUBE

- EPDM rubber (code 104N), black colour, antistatic ($R < 10^6 \Omega$), smooth.
- Resistance: according to MTG Chemical Resistance Chart.

REINFORCEMENT

- High strength plies of synthetic cord.

COVER

- EPDM rubber (code 104N), black, antistatic ($R < 10^6 \Omega$), resistant to abrasion, ozone and weather, smooth, cloth finish.

STANDARDS

- Execution in accordance with EN 12115:2011.

TEMPERATURE RANGE

- In accordance with EN 12115:2011.
- Resistant to steam up to +130°C for max. 30 minutes.

SAFETY FACTOR

- ≥ 4 times working pressure.

ELECTRICAL PROPERTIES

- Electrical resistance through the hose wall: $R < 10^9 \Omega$.
- Identification symbol:
 - Ω/T for version without copper wires;
 - M/T for version with copper wires.

MARKING

- Embossed tape according to EN 12115:2011, lengthwise.


MANICHEM EPDM
MADE IN ITALY

TECHNICAL SPECIFICATIONS

SIZE TOLERANCES: Inner diameter: EN 12115 - Outer diameter: EN 12115 - Length: ISO 1307

Inner Diameter mm	Outer diameter mm	Wall thickness mm	Working pressure BAR	Burst pressure BAR	Vacuum BAR	Min. bending radius mm	Approx. weight kg/m	Max. length m
13	23	5.0	16	64	-0.50	90	0.35	40
19	31	6.0	16	64	-0.50	125	0.55	40
25	37	6.0	16	64	-0.40	150	0.65	40
32	44	6.0	16	64	-0.40	175	0.85	40
38	51	6.5	16	64	-0.40	225	1.00	40
50	66	8.0	16	64	-0.30	275	1.70	40
51	67	8.0	16	64	-0.30	275	1.75	40
63.5	79.5	8.0	16	64	-	300	2.00	40
75	91	8.0	16	64	-	350*	2.50	40
76	92	8.0	16	64	-	350*	2.55	40
100	116	8.0	16	64	-	450*	3.20	40
102	118	8.0	16	64	-	450*	3.30	40

(*) The bending radius can be reached at a working pressure of ≥ 1 bar.

Chemical resistance acc. to MTG Chemical Resistance Chart. Above technical data are based on application at room temperature (+20°C). Other sizes are available on request.

Cod. IT-M00038
UPDATED: 05/19
Rev: 002


MANIFATTURA TUBI GOMMA S.p.A.

Grisignano di Zocco, 36040 (VI) ITALY
T. +39 0444.614755 | info@mtgspa.com
www.mtgspa.com



APPLICATION

- Suction and delivery hose for conveying aggressive chemicals.
- Especially suitable when impermeability to gases is requested.

CONSTRUCTION

TUBE

- IIR rubber - butyl (code 160 NE), antistatic ($R < 10^6 \Omega$), black, smooth.
- Resistance: according to MTG Chemical Resistance Chart.

REINFORCEMENT

- High strength plies of synthetic cord.
- Embedded steel helix wire.
- Copper wires on request.

COVER

- EPDM rubber (code 104N), black, antistatic ($R < 10^6 \Omega$), resistant to abrasion, ozone and weather, smooth, cloth finish.

STANDARDS

- Execution in accordance with EN 12115:2011.

TEMPERATURE RANGE

- In accordance with EN 12115:2011.
- Resistant to steam up to +130°C for max. 30 minutes.

SAFETY FACTOR

- ≥ 4 times working pressure up to ID 75 mm.
- ≥ 3 times working pressure over ID 75 mm.

ELECTRICAL PROPERTIES

- Electrical resistance through the hose wall: $R < 10^9 \Omega$.
- Identification symbol:
 - Ω/T for version without copper wires;
 - M/T for version with copper wires.

MARKING

- Embossed tape according to EN 12115:2011, lengthwise.



TECHNICAL SPECIFICATIONS

SIZE TOLERANCES: Inner diameter: EN 12115 - Outer diameter: EN 12115 - Length: ISO 1307

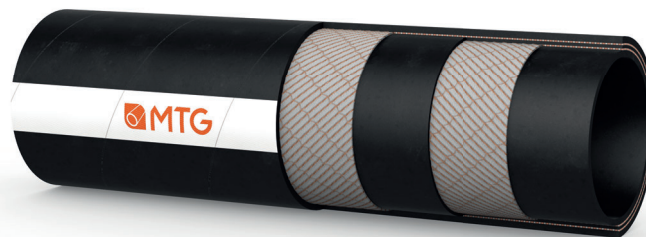
Inner Diameter mm	Outer diameter mm	Wall thickness mm	Working pressure BAR	Burst pressure BAR	Vacuum BAR	Min. bending radius mm	Approx. weight kg/m	Max. length m
19	31	6.0	16	64	-0.90	125	0.66	40
25	37	6.0	16	64	-0.90	150	0.85	40
32	44	6.0	16	64	-0.90	175	1.00	40
38	51	6.5	16	64	-0.90	225	1.40	40
50	66	8.0	16	64	-0.90	275	2.00	40
51	67	8.0	16	64	-0.90	275	2.05	40
63.5	79.5	8.0	16	64	-0.90	300	2.70	40
75	91	8.0	16	64	-0.80	350	3.20	40
76	92	8.0	16	48	-0.80	350	3.25	40
100	118	9.0	16	48	-0.80	450	4.90	40
102	120	9.0	16	48	-0.80	450	4.95	40

Above technical data are based on application at room temperature (+20°C). Other sizes are available on request.



MANIFATTURA TUBI GOMMA S.p.A.

Grisignano di Zocco, 36040 (VI) ITALY
T. +39 0444.614755 | info@mtgspa.com
www.mtgspa.com



APPLICATION

- Delivery hose for conveying aggressive chemicals.
- Especially suitable when impermeability to gases is requested.

CONSTRUCTION

TUBE

- IIR rubber - butyl (code 160 NE), antistatic ($R < 10^6 \Omega$), black, smooth.
- Resistance: according to MTG Chemical Resistance Chart.

REINFORCEMENT

- High strength plies of synthetic cord.
- Copper wires on request.

COVER

- EPDM rubber (code 104N), black, antistatic ($R < 10^6 \Omega$), resistant to abrasion, ozone and weather, smooth, cloth finish.

STANDARDS

- Execution in accordance with EN 12115:2011.

TEMPERATURE RANGE

- In accordance with EN 12115:2011.
- Resistant to steam up to +130°C for max. 30 minutes.

SAFETY FACTOR

- ≥ 4 times working pressure.

ELECTRICAL PROPERTIES

- Electrical resistance through the hose wall: $R < 10^9 \Omega$.
- Identification symbol:
 - Ω/T for version without copper wires;
 - M/T for version with copper wires.

MARKING

- Embossed tape according to EN 12115:2011, lengthwise.



TECHNICAL SPECIFICATIONS

SIZE TOLERANCES: Inner diameter: EN 12115 - Outer diameter: EN 12115 - Length: ISO 1307

Inner Diameter mm	Outer diameter mm	Wall thickness mm	Working pressure BAR	Burst pressure BAR	Vacuum BAR	Min. bending radius mm	Approx. weight kg/m	Max. length m
13	23	5.0	16	64	-0.50	90	0.35	40
19	31	6.0	16	64	-0.50	125	0.60	40
25	37	6.0	16	64	-0.40	150	0.74	40
32	44	6.0	16	64	-0.40	175	0.90	40
38	51	6.5	16	64	-0.40	225	1.10	40
50	66	8.0	16	64	-0.30	275	1.80	40
51	67	8.0	16	64	-0.30	275	1.85	40
63.5	79.5	8.0	16	64	---	300	2.15	40
75	91	8.0	16	64	---	350*	2.50	40
76	92	8.0	16	64	---	350*	2.55	40
100	116	8.0	16	64	---	450*	3.30	40
102	118	8.0	16	64	---	450*	3.36	40

(*) The bending radius can be reached at a pressure of ≥ 1 bar.

Chemical resistance acc. to MTG Chemical Resistance Chart. Above technical data are based on application at room temperature (+20°C). Other sizes are available on request.

Cod. IT-M00028

UPDATED: 10/18
Rev: 001