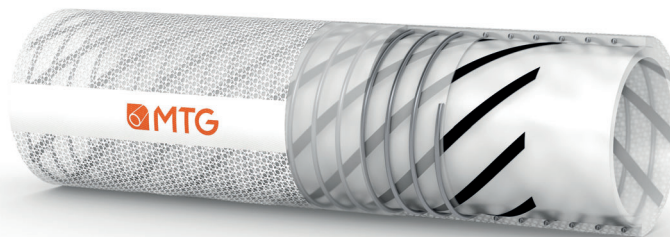




MANIFATTURA TUBI GOMMA S.p.A.

Grisignano di Zocco, 36040 (VI) ITALY
T. +39 0444.614755 | info@mtgspa.com
www.mtgspa.com



APPLICATION

- Silicone hose for suction of air mixed with non-abrasive high purity powders.
- Suitable for process applications requiring a tight bending radius and easy handling.
- Normally used for vacuum cleaners in pharmaceutical and cosmetic industries.
- Special version made with carbon fiber fabric to dissipate the electrostatic charges created by the friction of the powders on the hose walls.

CONSTRUCTION

TUBE

- Translucent silicone rubber (code silicone 3362PT), pharmaceutical and food quality, odourless and tasteless, mirror-smooth.

REINFORCEMENT

- Carbon fiber fabric.
- Embedded stainless steel helix wire AISI 304.
- High-strength plies of synthetic cord.

COVER

- Translucent silicone rubber (code silicone 3362PT), pharmaceutical and food quality.

STANDARDS

- Compliance: US Pharmacopoeia Class VI, FDA, BfR, E.P. 3.1.9. (European Pharmacopoeia), ISO 10993-4, -10, -11, non-cytotoxic acc. to ISO 10993-Part 5.

MAIN BENEFITS

- Platinum-cured silicone hose with non-stick properties.
- Made in Cleanroom ISO 14644-1 Class 8.**
- Safe solution for use in the aseptic environments and sanitary applications: utmost care is used starting from the choice of high-purity ingredients, production and storing procedures.
- Pharma-grade validation: tested in accordance with USP Class VI and EU Pharmacopoeia and FDA Standards.
- Hose in accordance with EC 1935/2004 and 2023/2006/EC (GMP).
- The MTG production cycle is free from animal derived ingredients, phthalates, adipates, nitrosamines, and materials subject to restrictions according to EC 1907/2006 (REACH).
- Non-plasticized hose.

TEMPERATURE RANGE

- From 0°C to +50°C.

NOTE

- In order to dissipate any electrostatic charges the hose must be grounded with the installation.

MARKING



MTG CLEARWAY HD PLATINUM

MADE IN CLEANROOM
ISO 14644-1 CLASS 8

TECHNICAL SPECIFICATIONS

SIZE TOLERANCES: I.D.: ISO 1307 - Wall thickness: +1/-0.5mm - Length: ISO 1307

Inner Diameter mm	Outer diameter mm	Wall thickness mm	Working pressure BAR	Burst pressure BAR	Min. bending radius mm	Vacuum BAR	Approx. weight kg/m	Max. length m
25	30	2.5	-	-	50	-0.7	0.214	10
38	44	2.0	-	-	80	-0.7	0.317	10
51	57	3.0	-	-	125	-0.7	0.482	10
63.5	70	3.3	-	-	190	-0.7	0.708	10

Other sizes and colours are available upon request. Please contact our Sales Department.
Above technical data are referring to application at room temperature (+20°C).



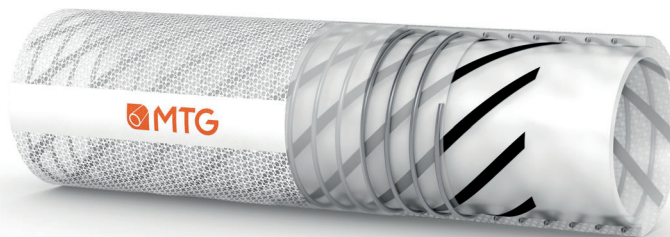
Cod. IT-M00167

UPDATED: 06/20
Rev: 003



MANIFATTURA TUBI GOMMA S.p.A.

Grisignano di Zocco, 36040 (VI) ITALY
T. +39 0444.614755 | info@mtgspa.com
www.mtgspa.com



APPLICATION

- Silicone hose for suction of air mixed with non-abrasive high purity powders.
- Suitable for process applications requiring a tight bending radius and easy handling.
- Normally used for vacuum cleaners in pharmaceutical and cosmetic industries.
- Special version made with carbon fiber fabric to dissipate the electrostatic charges created by the friction of the powders on the hose walls.

CONSTRUCTION

TUBE

- Translucent silicone rubber (code silicone 3362PT), pharmaceutical and food quality, odourless and tasteless, mirror-smooth.

REINFORCEMENT

- Carbon fiber fabric.
- Embedded stainless steel helix wire AISI 304.
- High-strength plies of synthetic cord.

COVER

- Translucent silicone rubber (code silicone 3362PT), pharmaceutical and food quality.

STANDARDS

- Compliance: US Pharmacopoeia Class VI, FDA, BfR, E.P. 3.1.9. (European Pharmacopoeia), ISO 10993-4, -10, -11, non-cytotoxic acc. to ISO 10993-Part 5.

MAIN BENEFITS

- Platinum-cured silicone hose with non-stick properties.
- Made in Cleanroom ISO 14644-1 Class 8.**
- Safe solution for use in the aseptic environments and sanitary applications: utmost care is used starting from the choice of high-purity ingredients, production and storing procedures.
- Pharma-grade validation: tested in accordance with USP Class VI and EU Pharmacopoeia and FDA Standards.
- Hose in accordance with EC 1935/2004 and 2023/2006/EC (GMP).
- The MTG production cycle is free from animal derived ingredients, phthalates, adipates, nitrosamines, and materials subject to restrictions according to EC 1907/2006 (REACH).
- Non-plasticized hose.

TEMPERATURE RANGE

- From 0°C to +50°C.

NOTE

- In order to dissipate any electrostatic charges the hose must be grounded with the installation.

MARKING



MTG CLEARWAY HD PLATINUM

MADE IN CLEANROOM
ISO 14644-1 CLASS 8

TECHNICAL SPECIFICATIONS

SIZE TOLERANCES: I.D.: ISO 1307 - Wall thickness: +1/-0.5mm - Length: ISO 1307

Inner Diameter mm	Outer diameter mm	Wall thickness mm	Working pressure BAR	Burst pressure BAR	Min. bending radius mm	Vacuum BAR	Approx. weight kg/m	Max. length m
25	30	2.5	-	-	50	-0.7	0.214	10
38	44	2.0	-	-	80	-0.7	0.317	10
51	57	3.0	-	-	125	-0.7	0.482	10
63.5	70	3.3	-	-	190	-0.7	0.708	10

Other sizes and colours are available upon request. Please contact our Sales Department.
Above technical data are referring to application at room temperature (+20°C).



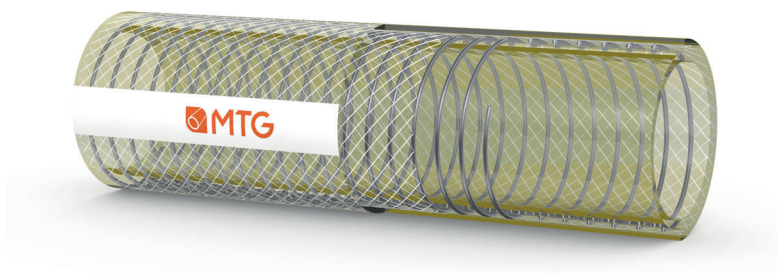
Cod. IT-M00167

UPDATED: 06/20
Rev: 003



MANIFATTURA TUBI GOMMA S.p.A.

Grisignano di Zocco, 36040 (VI) ITALY
T. +39 0444.614755 | info@mtgspa.com
www.mtgspa.com



APPLICATION

- Suction and delivery hose, specifically designed for conveying air mixed with powders.
- Normally used in the pharmaceutical and food industry.
- Tube designed and developed to ensure dissipation of electrostatic charges, with resistance $R < 10^9 \Omega$.

CONSTRUCTION

TUBE

- Technopolymer (code 3G26AU), see-through, odourless and tasteless, mirror-smooth.
- Abrasion loss: $< 36 \text{ mm}^3$ according to DIN 53516.
- Resistance: $R < 10^9 \Omega$.

REINFORCEMENT

- High strength plies of synthetic cord.
- Steel helix wire INOX AISI 302.

COVER

- Technopolymer (code 3G26AU), see-through, odourless and tasteless, smooth, glossy finish.
- Resistant to abrasion and ozone.

STANDARDS

- US Pharmacopoeia Class VI, non-cytotoxic acc. to ISO 10993-Part 5.
- Compliance: FDA, TRGS 727, Regulation EU n. 10/2011, D.M. 21/03/73 and following amendments, ISO 10993-4, -10, -11.

FITTINGS

- The hose may be supplied in application lengths and assembled with any kind of couplings (CLAMP, DIN 11851, etc.).
- Only for hose assemblies: test of electrical continuity between the couplings ($R < 10^2 \Omega$) according to EN 8031.

MAIN BENEFITS

- The inner surface of the hose, smooth and compact, makes easy the flow of the products conveyed and the cleaning operations. Excellent resistance to abrasion.
- See-through construction for easy visual inspection of the media conveyed.
- Light and easy to handle.
- Hose in accordance with the Regulations EC 1935/2004 and 2023/2006/EC (GMP).
- The MTG productive cycle does not employ phthalates, plasticizers, animal derived ingredients, and nitrosamines, thus reducing the risk of bacterial growth and contamination of the product conveyed.
- Non-plasticized hose.

TEMPERATURE RANGE

- From -10°C to $+85^\circ\text{C}$.
- Cleaning with water (up to $+100^\circ\text{C}$ without pressure) mixed with a normal mild cleaning detergent.

SAFETY FACTOR

- ≥ 3 times working pressure.

MARKING

MTG PHARMADUST ANTISTATIC MADE IN ITALY

TECHNICAL SPECIFICATIONS

SIZE TOLERANCES: I.D.: ISO 1307 - Wall thickness: DIN 7715 T4 S2 - Length: ISO 1307

Inner Diameter mm	Outer diameter mm	Wall thickness mm	Working pressure BAR	Burst pressure BAR	Min. bending radius mm	Vacuum BAR	Approx. weight kg/m	Max. length m
25	33	4.00	6	18	150	-0.9	0.52	20
38	46	4.00	6	18	230	-0.9	0.99	20
50	58.5	4.25	5	15	300	-0.9	1.37	20
63.5	72	4.25	4	12	400	-0.9	1.99	10
76	85	4.50	4	12	490	-0.8	2.29	10
100	112	6.00	3	9	700	-0.8	3.71	10

Other sizes are available upon request. Please contact our Sales Department.
Above technical data refer to application at room temperature ($+20^\circ\text{C}$).



MANIFATTURA TUBI GOMMA S.p.A.

Grisignano di Zocco, 36040 (VI) ITALY
T. +39 0444.614755 | info@mtgspa.com
www.mtgspa.com



APPLICATION

- Suction hose for air mixed with powders.
- Hose with steel helix wire, utmost see-through.
- Normally used in the pharmaceutical and food industry.

CONSTRUCTION

TUBE

- Technopolymer (code 3G26AU), see-through, odourless and tasteless, mirror-smooth.
- Abrasion loss: < 36 mm³ according to DIN 53516.

REINFORCEMENT

- Stainless steel helix wire AISI 302.

COVER

- Technopolymer (code 3G26AU), see-through, odourless and tasteless, smooth, glossy finish.
- Resistant to abrasion and ozone.

STANDARDS

- Tube and cover: USP Class VI, Regulation EU n. 10/2011, FDA, D.M. 21/03/73 and following amendments, ISO 10993-4, -10, -11, non-cytotoxic according to ISO 10993-Part 5.

FITTING

- The hose may be supplied in application lengths, assembled with any kind of couplings (CLAMP, DIN 11851, etc.).
- Only for hose assemblies: test of electrical continuity between the couplings ($R < 10^2 \Omega$) according to EN 8031.

MAIN BENEFITS

- The inner surface of the hose, smooth and compact, makes easy the flow of the products conveyed and the cleaning operations. Excellent resistance to abrasion.
- See-through construction for easy visual inspection of the media conveyed.
- Light and easy to handle.
- Hose in accordance with the Regulations EC 1935/2004 and 2023/2006/EC (GMP).
- The MTG productive cycle does not employ phthalates, plasticizers, animal derived ingredients, and nitrosamines, thus reducing the risk of bacterial growth and contamination of the product conveyed.
- Non-plasticized hose.

TEMPERATURE RANGE

- From -10°C to +85°C.
- Cleaning with water (up to +100°C without pressure) mixed with a normal mild cleaning detergent

SAFETY FACTOR

- ≥ 3 times working pressure.

MARKING



PHARMADUST

MADE IN ITALY

TECHNICAL SPECIFICATIONS

SIZE TOLERANCES: I.D.: ISO 1307 - Wall thickness: DIN 7715 T4 S2 - Length: ISO 1307

Inner Diameter mm	Outer diameter mm	Wall thickness mm	Working pressure BAR	Burst pressure BAR	Min. bending radius mm	Vacuum BAR	Approx. weight kg/m	Max. length m
25	33	4.0	1	3	150	-0.9	0.36	20
38	46	4.0	1	3	230	-0.9	0.52	20
50	58.5	4.25	1	3	300	-0.9	0.95	10
63.5	72	4.25	1	3	400	-0.9	1.20	10
76	85	4.5	1	3	490	-0.8	1.59	10
100	112	6.0	1	3	700	-0.8	2.42	10

Other sizes are available upon request. Please contact our Sales Department.
Above technical data refer to application at room temperature (+20°C).



MANIFATTURA TUBI GOMMA S.p.A.

Grisignano di Zocco, 36040 (VI) ITALY
T. +39 0444.614755 | info@mtgspa.com
www.mtgspa.com



APPLICATION

- Suction and delivery hose, specifically designed for conveying air mixed with powders.
- Normally used in the pharmaceutical and food industry.

CONSTRUCTION

TUBE

- Technopolymer (code 3G26AU), see-through, odourless and tasteless, mirror-smooth.
- Abrasion loss: < 36 mm³ according to DIN 53516.

REINFORCEMENT

- High strength plies of synthetic cord.
- Stainless steel helix wire AISI 302.

COVER

- Technopolymer (code 3G26AU), see-through, odourless and tasteless, smooth, glossy finish.
- Resistant to abrasion and ozone.

STANDARDS

- Tube and cover: USP Class VI, Regulation EU n. 10/2011, FDA, D.M. 21/03/73 and following amendments, ISO 10993-4, -10, -11, non-cytotoxic according to ISO 10993-Part 5.

FITTING

- The hose may be supplied in application lengths, assembled with any kind of couplings (CLAMP, DIN 11851, etc.).
- Only for hose assemblies: test of electrical continuity between the couplings ($R < 10^2 \Omega$) according to EN 8031.

MAIN BENEFITS

- The inner surface of the hose, smooth and compact, makes easy the flow of the products conveyed and the cleaning operations.
- Excellent resistance to abrasion.
- See-through construction for easy visual inspection of the media conveyed.
- Light and easy to handle.
- Hose in accordance with the Regulations EC 1935/2004 and 2023/2006/EC (GMP).
- The MTG productive cycle does not employ phthalates, plasticizers, animal derived ingredients, and nitrosamines, thus reducing the risk of bacterial growth and contamination of the product conveyed.
- Non-plasticized hose.

TEMPERATURE RANGE

- From -10°C to +85°C.
- Cleaning with water (up to +100°C without pressure) mixed with a normal mild cleaning detergent.

SAFETY FACTOR

- ≥ 3 times working pressure.

MARKING



TECHNICAL SPECIFICATIONS

SIZE TOLERANCES: I.D.: ISO 1307 - Wall thickness: DIN 7715 T4 S2 - Length: ISO 1307

Inner Diameter mm	Outer diameter mm	Wall thickness mm	Working pressure BAR	Burst pressure BAR	Min. bending radius mm	Vacuum BAR	Approx. weight kg/m	Max. length m
25	33	4.0	6	18	150	-0.9	0.38	20
38	46	4.0	6	18	230	-0.9	0.54	20
50	58.5	4.25	5	15	300	-0.9	0.98	20
63.5	72	4.25	4	12	400	-0.9	1.24	10
76	85	4.5	4	12	490	-0.8	1.63	10
100	112	6.0	3	9	700	-0.8	2.48	10

Other sizes are available upon request. Please contact our Sales Department.
Above technical data refer to application at room temperature (+20°C).



MANIFATTURA TUBI GOMMA S.p.A.

Grisignano di Zocco, 36040 (VI) ITALY
T. +39 0444.614755 | info@mtgspa.com
www.mtgspa.com



APPLICATION

- Flexible multipurpose hose "Full Ohm" for working areas requiring utmost safety.
- Perfect technical solution for handling cosmetic, pharmaceutical and highly flammable chemical products.
- Execution complying with EN 12115: 2011.
- Engineered to ensure dissipation of electrostatic charges not only on the surfaces (tube and cover $R < 10^6 \Omega$) but also through the hose wall ($R < 10^9 \Omega$).

CONSTRUCTION

TUBE

- PFA (Perfluoroalkoxy), fully fluorinated, mirror-smooth, black colour, antistatic ($R < 10^6 \Omega$), patented.
- Compliance: USP Class VI, FDA Standards, Regulation EU n. 10/2011, ISO 10993-4, -10, -11, non-cytotoxic according to ISO 10993-Part 5.

REINFORCEMENT

- High strength plies of synthetic cord.
- Embedded steel helix wire.
- Copper wires on request.

COVER

- Synthetic rubber, black colour, resistant to abrasion and ageing, antistatic ($R < 10^6 \Omega$), smooth, cloth finish.

PATENTS

- E.P. 1450092.

SAFETY FACTOR

- ≥ 4 times working pressure.

TEMPERATURE RANGE

- In accordance with EN 12115: 2011.

MAIN BENEFITS

- The fluorinated inner liner ensures utmost chemical and temperature resistance, excellent impermeability and contamination-free transport of the fluid conveyed.
- Hose in accordance with EC 1935/2004 and 2023/2006/EC (GMP).
- The MTG production cycle is free from animal derived ingredients, phthalates, adipates and materials subject to restrictions according to EC 1907/2006 (REACH).
- Non-plasticized inner tube.

STERILIZATION

- Steam disinfection, in an open circuit, with peaks up to +164°C for max. 20 minutes.

ELECTRICAL PROPERTIES

- Electrical resistance through the hose wall: $R < 10^9 \Omega$.
- Identification symbol:
 - Ω/T for version without copper wires;
 - M/T for version with copper wires.

NOTE

- Please check recommendations and instructions mentioned in the MTG "use and maintenance guideline for PFA/MFA hoses".
- Not autoclavable.

MARKING

- Embossed tape according to EN 12115: 2011, lengthwise.

MTG DYNAMIC SAFE-TECH PREMIUM

TECHNICAL SPECIFICATIONS

SIZE TOLERANCES: I.D.: EN 12115 - Wall thickness: EN 12115 - Length: ISO 1307

Inner Diameter mm	Outer diameter mm	Wall thickness mm	Working pressure BAR	Burst pressure BAR	Vacuum BAR	Min. bending radius (Static) mm	Min. bending radius (Dynamic) *	Approx. weight kg/m	Max. length m
13	25	6.0	10	40	-0.9	135	-	0.51	20
19	31	6.0	10	40	-0.9	188	-	0.67	30
25	37	6.0	10	40	-0.9	225	-	0.88	30
32	45	6.5	10	40	-0.9	262	-	1.16	30
38	51	6.5	10	40	-0.9	338	-	1.43	30
51	65.5	7.25	10	40	-0.9	412	-	1.95	30
63.5	79.5	8.0	10	40	-0.9	450	-	2.75	20
76	92	8.0	10	40	-0.9	525	-	3.20	20
100	117	8.5	10	40	-0.9	700	-	4.60	20

(*) In case of dynamic application please contact our Technical Dept.

Above technical data are referring to application at room temperature (+20°C). Other sizes and colours are available upon request. Please contact our Sales Department.



MANIFATTURA TUBI GOMMA S.p.A.

Grisignano di Zocco, 36040 (VI) ITALY
T. +39 0444.614755 | info@mtgspa.com
www.mtgspa.com



APPLICATION

- Multipurpose hose "Full Ohm", designed for conveying cosmetic, pharmaceutical and highly flammable chemical products in working areas requiring utmost safety.
- Execution complying with EN 12115: 2011.
- Engineered to ensure dissipation of electrostatic charges not only on the surfaces (tube and cover $R < 10^6 \Omega$) but also through the hose wall ($R < 10^9 \Omega$).

CONSTRUCTION

TUBE

- PFA (Perfluoroalkoxy), fully fluorinated, mirror-smooth, black colour, antistatic ($R < 10^6 \Omega$), patented.
- Compliance: USP Class VI, FDA Standards, Regulation EU n. 10/2011, ISO 10993-4, -10, -11, non-cytotoxic according to ISO 10993-Part 5.

REINFORCEMENT

- High-strength plies of synthetic cord and embedded steel helix wire.
- Copper wires on request.

COVER

- Marble finish (UHMWPE), black and white, patented, smooth; resistant to abrasion, ozone and ageing. The special marble finish with a low coefficient of friction complies with FDA Standards, odourless and tasteless.
- The cover does not stain the contact surfaces.
- Antistatic: Electrical resistance $R < 10^6 \Omega$.

PATENTS

- E.P. 1450092, E.P. 1580475.
- U.S. Patent 7,389,799.

CERTIFICATIONS

- Hose approved by the Institute Ineris for use in Atex areas, attestation nr. INERIS-DRA-20-200870-02408A available up to DN 3".

MAIN BENEFITS

- The fluorinated inner liner ensures utmost chemical and temperature resistance, an excellent impermeability, and absolutely contamination-free transport of the fluid conveyed.
- Marble finish cover, smooth and easy to clean. Resistant to mild chemicals and aggressive acids for short time.
- Hose in accordance with EC 1935/2004 and 2023/2006/EC (GMP).
- The MTG production cycle is free from animal derived ingredients, phthalates, adipates, and materials subject to restrictions acc. to EC 1907/2006 (REACH).
- Non-plasticized inner tube.

TEMPERATURE RANGE

- In accordance with EN 12115: 2011.

ELECTRICAL PROPERTIES

- Electrical resistance through the hose wall: $R < 10^9 \Omega$.
- Identification symbol:
 - Ω/T for version without copper wires;
 - M/T for version with copper wires.

NOTE

- Please check recommendations and instructions mentioned in the MTG "use and maintenance guideline for PFA/MFA hoses".
- Not autoclavable.

MARKING

- Embossed tape according to EN 12115: 2011, lengthwise.

MTG DYNAMIC SAFE-TECH PFA HERE TESTED FOR USE IN ATEX ZONES CONFORMS TO EN 12115:2011 CONFORMS TO EN 10993-4:2007 CONFORMS TO EN 10993-10:2008 CONFORMS TO EN 10993-11:2008 CONFORMS TO EN 10993-12:2008 CONFORMS TO EN 10993-13:2008 CONFORMS TO EN 10993-14:2008 CONFORMS TO EN 10993-15:2008 CONFORMS TO EN 10993-16:2008 CONFORMS TO EN 10993-17:2008 CONFORMS TO EN 10993-18:2008 CONFORMS TO EN 10993-19:2008 CONFORMS TO EN 10993-20:2008 CONFORMS TO EN 10993-21:2008 CONFORMS TO EN 10993-22:2008 CONFORMS TO EN 10993-23:2008 CONFORMS TO EN 10993-24:2008 CONFORMS TO EN 10993-25:2008 CONFORMS TO EN 10993-26:2008 CONFORMS TO EN 10993-27:2008 CONFORMS TO EN 10993-28:2008 CONFORMS TO EN 10993-29:2008 CONFORMS TO EN 10993-30:2008 CONFORMS TO EN 10993-31:2008 CONFORMS TO EN 10993-32:2008 CONFORMS TO EN 10993-33:2008 CONFORMS TO EN 10993-34:2008 CONFORMS TO EN 10993-35:2008 CONFORMS TO EN 10993-36:2008 CONFORMS TO EN 10993-37:2008 CONFORMS TO EN 10993-38:2008 CONFORMS TO EN 10993-39:2008 CONFORMS TO EN 10993-40:2008 CONFORMS TO EN 10993-41:2008 CONFORMS TO EN 10993-42:2008 CONFORMS TO EN 10993-43:2008 CONFORMS TO EN 10993-44:2008 CONFORMS TO EN 10993-45:2008 CONFORMS TO EN 10993-46:2008 CONFORMS TO EN 10993-47:2008 CONFORMS TO EN 10993-48:2008 CONFORMS TO EN 10993-49:2008 CONFORMS TO EN 10993-50:2008 CONFORMS TO EN 10993-51:2008 CONFORMS TO EN 10993-52:2008 CONFORMS TO EN 10993-53:2008 CONFORMS TO EN 10993-54:2008 CONFORMS TO EN 10993-55:2008 CONFORMS TO EN 10993-56:2008 CONFORMS TO EN 10993-57:2008 CONFORMS TO EN 10993-58:2008 CONFORMS TO EN 10993-59:2008 CONFORMS TO EN 10993-60:2008 CONFORMS TO EN 10993-61:2008 CONFORMS TO EN 10993-62:2008 CONFORMS TO EN 10993-63:2008 CONFORMS TO EN 10993-64:2008 CONFORMS TO EN 10993-65:2008 CONFORMS TO EN 10993-66:2008 CONFORMS TO EN 10993-67:2008 CONFORMS TO EN 10993-68:2008 CONFORMS TO EN 10993-69:2008 CONFORMS TO EN 10993-70:2008 CONFORMS TO EN 10993-71:2008 CONFORMS TO EN 10993-72:2008 CONFORMS TO EN 10993-73:2008 CONFORMS TO EN 10993-74:2008 CONFORMS TO EN 10993-75:2008 CONFORMS TO EN 10993-76:2008 CONFORMS TO EN 10993-77:2008 CONFORMS TO EN 10993-78:2008 CONFORMS TO EN 10993-79:2008 CONFORMS TO EN 10993-80:2008 CONFORMS TO EN 10993-81:2008 CONFORMS TO EN 10993-82:2008 CONFORMS TO EN 10993-83:2008 CONFORMS TO EN 10993-84:2008 CONFORMS TO EN 10993-85:2008 CONFORMS TO EN 10993-86:2008 CONFORMS TO EN 10993-87:2008 CONFORMS TO EN 10993-88:2008 CONFORMS TO EN 10993-89:2008 CONFORMS TO EN 10993-90:2008 CONFORMS TO EN 10993-91:2008 CONFORMS TO EN 10993-92:2008 CONFORMS TO EN 10993-93:2008 CONFORMS TO EN 10993-94:2008 CONFORMS TO EN 10993-95:2008 CONFORMS TO EN 10993-96:2008 CONFORMS TO EN 10993-97:2008 CONFORMS TO EN 10993-98:2008 CONFORMS TO EN 10993-99:2008 CONFORMS TO EN 10993-100:2008 CONFORMS TO EN 10993-101:2008 CONFORMS TO EN 10993-102:2008 CONFORMS TO EN 10993-103:2008 CONFORMS TO EN 10993-104:2008 CONFORMS TO EN 10993-105:2008 CONFORMS TO EN 10993-106:2008 CONFORMS TO EN 10993-107:2008 CONFORMS TO EN 10993-108:2008 CONFORMS TO EN 10993-109:2008 CONFORMS TO EN 10993-110:2008 CONFORMS TO EN 10993-111:2008 CONFORMS TO EN 10993-112:2008 CONFORMS TO EN 10993-113:2008 CONFORMS TO EN 10993-114:2008 CONFORMS TO EN 10993-115:2008 CONFORMS TO EN 10993-116:2008 CONFORMS TO EN 10993-117:2008 CONFORMS TO EN 10993-118:2008 CONFORMS TO EN 10993-119:2008 CONFORMS TO EN 10993-120:2008 CONFORMS TO EN 10993-121:2008 CONFORMS TO EN 10993-122:2008 CONFORMS TO EN 10993-123:2008 CONFORMS TO EN 10993-124:2008 CONFORMS TO EN 10993-125:2008 CONFORMS TO EN 10993-126:2008 CONFORMS TO EN 10993-127:2008 CONFORMS TO EN 10993-128:2008 CONFORMS TO EN 10993-129:2008 CONFORMS TO EN 10993-130:2008 CONFORMS TO EN 10993-131:2008 CONFORMS TO EN 10993-132:2008 CONFORMS TO EN 10993-133:2008 CONFORMS TO EN 10993-134:2008 CONFORMS TO EN 10993-135:2008 CONFORMS TO EN 10993-136:2008 CONFORMS TO EN 10993-137:2008 CONFORMS TO EN 10993-138:2008 CONFORMS TO EN 10993-139:2008 CONFORMS TO EN 10993-140:2008 CONFORMS TO EN 10993-141:2008 CONFORMS TO EN 10993-142:2008 CONFORMS TO EN 10993-143:2008 CONFORMS TO EN 10993-144:2008 CONFORMS TO EN 10993-145:2008 CONFORMS TO EN 10993-146:2008 CONFORMS TO EN 10993-147:2008 CONFORMS TO EN 10993-148:2008 CONFORMS TO EN 10993-149:2008 CONFORMS TO EN 10993-150:2008 CONFORMS TO EN 10993-151:2008 CONFORMS TO EN 10993-152:2008 CONFORMS TO EN 10993-153:2008 CONFORMS TO EN 10993-154:2008 CONFORMS TO EN 10993-155:2008 CONFORMS TO EN 10993-156:2008 CONFORMS TO EN 10993-157:2008 CONFORMS TO EN 10993-158:2008 CONFORMS TO EN 10993-159:2008 CONFORMS TO EN 10993-160:2008 CONFORMS TO EN 10993-161:2008 CONFORMS TO EN 10993-162:2008 CONFORMS TO EN 10993-163:2008 CONFORMS TO EN 10993-164:2008 CONFORMS TO EN 10993-165:2008 CONFORMS TO EN 10993-166:2008 CONFORMS TO EN 10993-167:2008 CONFORMS TO EN 10993-168:2008 CONFORMS TO EN 10993-169:2008 CONFORMS TO EN 10993-170:2008 CONFORMS TO EN 10993-171:2008 CONFORMS TO EN 10993-172:2008 CONFORMS TO EN 10993-173:2008 CONFORMS TO EN 10993-174:2008 CONFORMS TO EN 10993-175:2008 CONFORMS TO EN 10993-176:2008 CONFORMS TO EN 10993-177:2008 CONFORMS TO EN 10993-178:2008 CONFORMS TO EN 10993-179:2008 CONFORMS TO EN 10993-180:2008 CONFORMS TO EN 10993-181:2008 CONFORMS TO EN 10993-182:2008 CONFORMS TO EN 10993-183:2008 CONFORMS TO EN 10993-184:2008 CONFORMS TO EN 10993-185:2008 CONFORMS TO EN 10993-186:2008 CONFORMS TO EN 10993-187:2008 CONFORMS TO EN 10993-188:2008 CONFORMS TO EN 10993-189:2008 CONFORMS TO EN 10993-190:2008 CONFORMS TO EN 10993-191:2008 CONFORMS TO EN 10993-192:2008 CONFORMS TO EN 10993-193:2008 CONFORMS TO EN 10993-194:2008 CONFORMS TO EN 10993-195:2008 CONFORMS TO EN 10993-196:2008 CONFORMS TO EN 10993-197:2008 CONFORMS TO EN 10993-198:2008 CONFORMS TO EN 10993-199:2008 CONFORMS TO EN 10993-200:2008 CONFORMS TO EN 10993-201:2008 CONFORMS TO EN 10993-202:2008 CONFORMS TO EN 10993-203:2008 CONFORMS TO EN 10993-204:2008 CONFORMS TO EN 10993-205:2008 CONFORMS TO EN 10993-206:2008 CONFORMS TO EN 10993-207:2008 CONFORMS TO EN 10993-208:2008 CONFORMS TO EN 10993-209:2008 CONFORMS TO EN 10993-210:2008 CONFORMS TO EN 10993-211:2008 CONFORMS TO EN 10993-212:2008 CONFORMS TO EN 10993-213:2008 CONFORMS TO EN 10993-214:2008 CONFORMS TO EN 10993-215:2008 CONFORMS TO EN 10993-216:2008 CONFORMS TO EN 10993-217:2008 CONFORMS TO EN 10993-218:2008 CONFORMS TO EN 10993-219:2008 CONFORMS TO EN 10993-220:2008 CONFORMS TO EN 10993-221:2008 CONFORMS TO EN 10993-222:2008 CONFORMS TO EN 10993-223:2008 CONFORMS TO EN 10993-224:2008 CONFORMS TO EN 10993-225:2008 CONFORMS TO EN 10993-226:2008 CONFORMS TO EN 10993-227:2008 CONFORMS TO EN 10993-228:2008 CONFORMS TO EN 10993-229:2008 CONFORMS TO EN 10993-230:2008 CONFORMS TO EN 10993-231:2008 CONFORMS TO EN 10993-232:2008 CONFORMS TO EN 10993-233:2008 CONFORMS TO EN 10993-234:2008 CONFORMS TO EN 10993-235:2008 CONFORMS TO EN 10993-236:2008 CONFORMS TO EN 10993-237:2008 CONFORMS TO EN 10993-238:2008 CONFORMS TO EN 10993-239:2008 CONFORMS TO EN 10993-240:2008 CONFORMS TO EN 10993-241:2008 CONFORMS TO EN 10993-242:2008 CONFORMS TO EN 10993-243:2008 CONFORMS TO EN 10993-244:2008 CONFORMS TO EN 10993-245:2008 CONFORMS TO EN 10993-246:2008 CONFORMS TO EN 10993-247:2008 CONFORMS TO EN 10993-248:2008 CONFORMS TO EN 10993-249:2008 CONFORMS TO EN 10993-250:2008 CONFORMS TO EN 10993-251:2008 CONFORMS TO EN 10993-252:2008 CONFORMS TO EN 10993-253:2008 CONFORMS TO EN 10993-254:2008 CONFORMS TO EN 10993-255:2008 CONFORMS TO EN 10993-256:2008 CONFORMS TO EN 10993-257:2008 CONFORMS TO EN 10993-258:2008 CONFORMS TO EN 10993-259:2008 CONFORMS TO EN 10993-260:2008 CONFORMS TO EN 10993-261:2008 CONFORMS TO EN 10993-262:2008 CONFORMS TO EN 10993-263:2008 CONFORMS TO EN 10993-264:2008 CONFORMS TO EN 10993-265:2008 CONFORMS TO EN 10993-266:2008 CONFORMS TO EN 10993-267:2008 CONFORMS TO EN 10993-268:2008 CONFORMS TO EN 10993-269:2008 CONFORMS TO EN 10993-270:2008 CONFORMS TO EN 10993-271:2008 CONFORMS TO EN 10993-272:2008 CONFORMS TO EN 10993-273:2008 CONFORMS TO EN 10993-274:2008 CONFORMS TO EN 10993-275:2008 CONFORMS TO EN 10993-276:2008 CONFORMS TO EN 10993-277:2008 CONFORMS TO EN 10993-278:2008 CONFORMS TO EN 10993-279:2008 CONFORMS TO EN 10993-280:2008 CONFORMS TO EN 10993-281:2008 CONFORMS TO EN 10993-282:2008 CONFORMS TO EN 10993-283:2008 CONFORMS TO EN 10993-284:2008 CONFORMS TO EN 10993-285:2008 CONFORMS TO EN 10993-286:2008 CONFORMS TO EN 10993-287:2008 CONFORMS TO EN 10993-288:2008 CONFORMS TO EN 10993-289:2008 CONFORMS TO EN 10993-290:2008 CONFORMS TO EN 10993-291:2008 CONFORMS TO EN 10993-292:2008 CONFORMS TO EN 10993-293:2008 CONFORMS TO EN 10993-294:2008 CONFORMS TO EN 10993-295:2008 CONFORMS TO EN 10993-296:2008 CONFORMS TO EN 10993-297:2008 CONFORMS TO EN 10993-298:2008 CONFORMS TO EN 10993-299:2008 CONFORMS TO EN 10993-300:2008 CONFORMS TO EN 10993-301:2008 CONFORMS TO EN 10993-302:2008 CONFORMS TO EN 10993-303:2008 CONFORMS TO EN 10993-304:2008 CONFORMS TO EN 10993-305:2008 CONFORMS TO EN 10993-306:2008 CONFORMS TO EN 10993-307:2008 CONFORMS TO EN 10993-308:2008 CONFORMS TO EN 10993-309:2008 CONFORMS TO EN 10993-310:2008 CONFORMS TO EN 10993-311:2008 CONFORMS TO EN 10993-312:2008 CONFORMS TO EN 10993-313:2008 CONFORMS TO EN 10993-314:2008 CONFORMS TO EN 10993-315:2008 CONFORMS TO EN 10993-316:2008 CONFORMS TO EN 10993-317:2008 CONFORMS TO EN 10993-318:2008 CONFORMS TO EN 10993-319:2008 CONFORMS TO EN 10993-320:2008 CONFORMS TO EN 10993-321:2008 CONFORMS TO EN 10993-322:2008 CONFORMS TO EN 10993-323:2008 CONFORMS TO EN 10993-324:2008 CONFORMS TO EN 10993-325:2008 CONFORMS TO EN 10993-326:2008 CONFORMS TO EN 10993-327:2008 CONFORMS TO EN 10993-328:2008 CONFORMS TO EN 10993-329:2008 CONFORMS TO EN 10993-330:2008 CONFORMS TO EN 10993-331:2008 CONFORMS TO EN 10993-332:2008 CONFORMS TO EN 10993-333:2008 CONFORMS TO EN 10993-334:2008 CONFORMS TO EN 10993-335:2008 CONFORMS TO EN 10993-336:2008 CONFORMS TO EN 10993-337:2008 CONFORMS TO EN 10993-338:2008 CONFORMS TO EN 10993-339:2008 CONFORMS TO EN 10993-340:2008 CONFORMS TO EN 10993-341:2008 CONFORMS TO EN 10993-342:2008 CONFORMS TO EN 10993-343:2008 CONFORMS TO EN 10993-344:2008 CONFORMS TO EN 10993-345:2008 CONFORMS TO EN 10993-346:2008 CONFORMS TO EN 10993-347:2008 CONFORMS TO EN 10993-348:2008 CONFORMS TO EN 10993-349:2008 CONFORMS TO EN 10993-350:2008 CONFORMS TO EN 10993-351:2008 CONFORMS TO EN 10993-352:2008 CONFORMS TO EN 10993-353:2008 CONFORMS TO EN 10993-354:2008 CONFORMS TO EN 10993-355:2008 CONFORMS TO EN 10993-356:2008 CONFORMS TO EN 10993-357:2008 CONFORMS TO EN 10993-358:2008 CONFORMS TO EN 10993-359:2008 CONFORMS TO EN 10993-360:2008 CONFORMS TO EN 10993-361:2008 CONFORMS TO EN 10993-362:2008 CONFORMS TO EN 10993-363:2008 CONFORMS TO EN 10993-364:2008 CONFORMS TO EN 10993-365:2008 CONFORMS TO EN 10993-366:2008 CONFORMS TO EN 10993-367:2008 CONFORMS TO EN 10993-368:2008 CONFORMS TO EN 10993-369:2008 CONFORMS TO EN 10993-370:2008 CONFORMS TO EN 10993-371:2008 CONFORMS TO EN 10993-372:2008 CONFORMS TO EN 10993-373:2008 CONFORMS TO EN 10993-374:2008 CONFORMS TO EN 10993-375:2008 CONFORMS TO EN 10993-376:2008 CONFORMS TO EN 10993-377:2008 CONFORMS TO EN 10993-378:2008 CONFORMS TO EN 10993-379:2008 CONFORMS TO EN 10993-380:2008 CONFORMS TO EN 10993-381:2008 CONFORMS TO EN 10993-382:2008 CONFORMS TO EN 10993-383:2008 CONFORMS TO EN 10993-384:2008 CONFORMS TO EN 10993-385:2008 CONFORMS TO EN 10993-386:2008 CONFORMS TO EN 10993-387:2008 CONFORMS TO EN 10993-388:2008 CONFORMS TO EN 10993-389:2008 CONFORMS TO EN 10993-390:2008 CONFORMS TO EN 10993-391:2008 CONFORMS TO EN 10993-392:2008 CONFORMS TO EN 10993-393:2008 CONFORMS TO EN 10993-394:2008 CONFORMS TO EN 10993-395:2008 CONFORMS TO EN 10993-396:2



MANIFATTURA TUBI GOMMA S.p.A.

Grisignano di Zocco, 36040 (VI) ITALY
T. +39 0444.614755 | info@mtgspa.com
www.mtgspa.com



APPLICATION

- Multipurpose suction and delivery hose for conveying solvents and chemicals with high concentration.
- Execution in accordance with regulation EN 12115:2011.

CONSTRUCTION

TUBE

- MFA (Perfluoralkoxy Polymer, MFA), fully fluorinated, light colour, mirror-smooth, odourless and tasteless.
- Compliance: USP Class VI, FDA Standards, D.M. 21/03/73 and following amendments, Regulation (EU) n. 10/2011.

REINFORCEMENT

- High strength plies of synthetic cord and embedded steel helix wire.
- Two copper wires are built in.

COVER

- Marble finish (UPE), black and white, patented, smooth; resistant to abrasion, ozone and weather.
- Antistatic in acc. with EN 12115:2011. Electric resistance $R < 10^6 \Omega$.

ELECTRICAL PROPERTIES

- Identification symbol: M.
- Model without copper wires available upon request; identification symbol: Ω .

PATENTS

- E.P. 1450092.
- E.P. 1580475 B1.
- US Patent 7,389,799.

MAIN BENEFITS

- The fluorinated inner liner ensures an excellent impermeability and resistance to oxidation, temperature and mechanical stress, thus avoiding cracks.
- The special marble cover with a low coefficient of friction does not stain the contact surfaces; it is odourless, tasteless and especially suitable for application in pharmaceutical environments and productions requiring the use of inert, contamination-free materials. Also it may easily be washed with the most common cleaning products and withstands sort contact even with aggressive chemicals inside the hose.
- Hose in accordance with EC 1935/2004 and 2023/2006/EC (GMP). The MTG production cycle is free from animal derived ingredients, phthalates, adipates and materials subject to restrictions acc. to EC 1907/2006 (REACH).

TEMPERATURE RANGE

- In accordance with EN 12115:2011.
- Resistance to steam up to +130°C for max. 30 minutes.

SAFETY FACTOR

- ≥ 4 times working pressure up to ID 75 mm.
- ≥ 3 times working pressure over ID 75 mm.

NOTE

- We suggest you to follow the instructions mentioned in the MTG "Use and maintenance guide for PFA/MFA hoses".

MARKING

- Embossed tape according to EN 12115:2011, lengthwise.

MTG MANIFLON MFA PHARMA

EUROPEAN PATENT 1450092
U.S. PATENT 7,389,799

USP CLASS VI
EU 10/2011
FDA FOOD QUALITY
DM 21/03/73
PATENTED E.P. 1450092
PATENTED E.P. 1580475 B1
PATENTED US 7,389,799
MADE IN ITALY

TECHNICAL SPECIFICATIONS

SIZE TOLERANCES: I.D.: EN 12115 - Wall thickness: EN 12115 - Length: ISO 1307

Inner Diameter mm	Outer diameter mm	Wall thickness mm	Working pressure BAR	Burst pressure BAR	Vacuum BAR	Min. bending radius mm	Approx. weight kg/m	Max. length m
13	25	6.0	16	64	-0.9	90	0.55	20
19	32	6.5	16	64	-0.9	125	0.75	30
25	38	6.5	16	64	-0.9	150	0.95	30
32	45	6.5	16	64	-0.9	190	1.15	30
38	51	6.5	16	64	-0.9	230	1.50	30
51	66	7.5	16	64	-0.9	300	2.20	30
63.5	79.5	8.0	16	64	-0.9	390	3.00	20
76	93	8.5	16	48	-0.9	450	3.70	20
100	118	9.0	16	48	-0.9	500	5.00	20

Chemical resistance acc. to MTG Chemical Resistance Chart. Above technical data refer to application at room temperature (+20°C). Other sizes and colours are available upon request. Please contact our Sales Department.



Cod. IT-M00079

UPDATED: 03/19
Rev: 002



MANIFATTURA TUBI GOMMA S.p.A.

Grisignano di Zocco, 36040 (VI) ITALY
T. +39 0444.614755 | info@mtgspa.com
www.mtgspa.com



APPLICATION

- Multipurpose hose, specifically designed to convey pharmaceutical, cosmetic and chemical substances.
- Especially suitable for application in pharmaceutical environments and production processes requiring the use of non-contaminating, inert materials.

CONSTRUCTION

TUBE

- PFA (Perfluoroalkoxy Polymer), white colour, fully fluorinated, mirror-smooth. Odourless and tasteless.
- Compliance: USP Class VI, 3A, FDA Standards, D.M. 21/03/73 and following amendments, Regulation EU n. 10/2011, ISO 10993-4, -10, -11, non-cytotoxic according to ISO 10993-Part 5.

REINFORCEMENT

- High strength plies of synthetic cord and embedded steel helix wire.
- Two embedded copper wires.

COVER

- Marble finish (UPE), black and white, patented, smooth, resistant to abrasion, ozone and ageing.
- Antistatic: Electrical resistance $R < 10^6 \Omega$.
- The special marble finish with a low coefficient of friction complies with FDA Standards, odourless and tasteless. The cover does not stain the contact surfaces.

PATENTS

- E.P. 1450092.
- E.P. 1580475.
- U.S. Patent 7,389,799.

SAFETY FACTOR

- ≥ 4 times working pressure.

MAIN BENEFITS

- The fluorinated tube ensures an excellent impermeability and contamination-free transport of the fluid.
- Also, it provides excellent resistance to repeated bending cycles according to ASTM D 2176.
- Marble finish cover, smooth and easy to clean. Resistant to mild chemicals and aggressive acids for short time.
- Hose in accordance with EC 1935/2004 and 2023/2006/EC (GMP). The MTG production cycle is free from animal derived ingredients, phthalates, adipates and materials subject to restrictions acc. to EC 1907/2006 (REACH).
- Non-plasticized inner tube.

TEMPERATURE RANGE

- From -40°C to $+130^{\circ}\text{C}$ depending on the fluids conveyed and the application. In case of dynamic application: from $+10^{\circ}\text{C}$ to $+40^{\circ}\text{C}$.

STERILIZATION

- Sterilization up to $+150^{\circ}\text{C}$ for max. 30 minutes.

NOTE

- Execution acc. to EN 12115:2011, upon request.
- Please check recommendations and instructions mentioned in the MTG "Use and maintenance guideline for PFA/MFA hoses".

MARKING

- If required, execution according to EN 12115:2011, embossed tape according to EN 12115: 2011, lengthwise, with identification symbol:
 - Ω for version WITHOUT embedded copper wires;
 - M for version WITH embedded copper wires.

MTG DYNAMIC ANTISTATIC



MADE IN ITALY

TECHNICAL SPECIFICATIONS

SIZE TOLERANCES: I.D.: ISO 1307 - Wall thickness: DIN 7715 T4 S2 - Length: ISO 1307

Inner Diameter mm	Outer diameter mm	Wall thickness mm	Working pressure BAR	Burst pressure BAR	Vacuum BAR	Min. bending radius (Static) mm	Min. bending radius (Dynamic) mm	Approx. weight kg/m	Max. length m
13	25	6.0	10	40	-0.9	45	60	0.55	20
19	31	6.0	10	40	-0.9	65	90	0.72	30
25	37	6.0	10	40	-0.9	85	140	0.89	30
32	45	6.5	10	40	-0.9	120	200	1.16	30
38	51	6.5	10	40	-0.9	140	250	1.47	30
51	65.5	7.25	10	40	-0.9	180	300	2.08	30
51	67	8.0	10	40	-0.9	180	300	2.20	30
63.5	79.5	8.0	10	40	-0.9	250	380	2.80	20
76	92	8.0	10	40	-0.9	350	500	3.48	20
100	117	8.5	10	40	-0.9	700	700	4.77	20

Chemical resistance acc. to MTG Chemical Resistance Chart. Above technical data refer to application at room temperature ($+20^{\circ}\text{C}$). Other sizes and colours are available upon request. Please contact our Sales Department.



Cod. IT-D00045

UPDATED: 10/21
Rev: 002



MANIFATTURA TUBI GOMMA S.p.A.

Grisignano di Zocco, 36040 (VI) ITALY
T. +39 0444.614755 | info@mtgspa.com
www.mtgspa.com



APPLICATION

- Multipurpose hose specifically designed for conveying pharmaceutical, cosmetic, chemical and food products in pharma-cosmetic, biotech and food industries.
- Excellent solution for use under dynamic stress during transport of high purity fluids.
- Especially suitable for use on dosing equipments.
- Suction and delivery hose.

CONSTRUCTION

TUBE

- PFA (Perfluoralkoxy), light colour, fully fluorinated, mirror-smooth.
- Compliance: USP Class VI, 3-A Sanitary Standard n.20-27, FDA Standards, D.M. 21/03/73 and following amendments, Regulation EU n. 10/2011, ISO 10993-4, -10, -11, non-cytotoxic according to ISO 10993-Part 5.
- Good resistance to temperature, to cracking under mechanical stress, and bending.

REINFORCEMENT

- High strength plies of synthetic cord.
- Embedded steel helix wire.
- Two copper wires are embedded.

COVER

- EPDM rubber, blue colour, smooth, abrasion, ozone and weather resistant, cloth finish.

PATENTS

- E.P. 1450092.

MAIN BENEFITS

- The fluorinated inner liner, essentially inert, ensures excellent impermeability and contamination-free transport of the fluid conveyed.
- It provides good resistance to extreme temperatures and good resistance to mechanical stress.
- Hose in accordance with EC 1935/2004 and 2023/2006/EC (GMP).
- The MTG production cycle is free from animal derived ingredients, phthalates, adipates, nitrosamines, and materials subject to restrictions acc. to EC 1907/2006 (REACH).
- Non-plasticized inner tube.

SAFETY FACTOR

- ≥ 4 times working pressure.

TEMPERATURE RANGE

- From -40°C to +150°C depending on the fluids conveyed.
- The a.m. temperature range has to be considered as a general indication referring to most chemicals; however it does not include the most aggressive combinations of products and the conditions of use. For specific applications please contact our Technical Department.

NOTE

- We suggest you to follow the instructions mentioned in the MTG "Use and maintenance guide for PFA/MFA hoses".

MARKING

MTG DYNAMIC®

E.PATENT 1450092



TECHNICAL SPECIFICATIONS

SIZE TOLERANCES: I.D.: ISO 1307 - Wall thickness: DIN 7715 T4 S2 - Length: ISO 1307

Inner Diameter mm	Outer diameter mm	Wall thickness mm	Working pressure BAR	Burst pressure BAR	Vacuum BAR	Min. bending radius (Static) mm	Min. bending radius (Dynamic) mm	Approx. weight kg/m	Max. length m
13	25	6.0	10	40	-0.9	45	60	0.55	20
19	31	6.0	10	40	-0.9	65	90	0.72	30
25	37	6.0	10	40	-0.9	85	140	0.89	30
32	45	6.5	10	40	-0.9	120	200	1.16	30
38	51	6.5	10	40	-0.9	140	250	1.47	30
51	65.5	7.25	10	40	-0.9	180	300	2.08	30
63.5	79.5	8.0	10	40	-0.9	250	380	2.80	20
76	92	8.0	10	40	-0.9	350	500	3.48	20
100	117	8.5	10	40	-0.9	700	700	4.77	20

Chemical resistance acc. to MTG Chemical Resistance Chart. Above technical data refer to application at room temperature (+20°C). Other sizes and colours are available upon request. Please contact our Sales Dept.



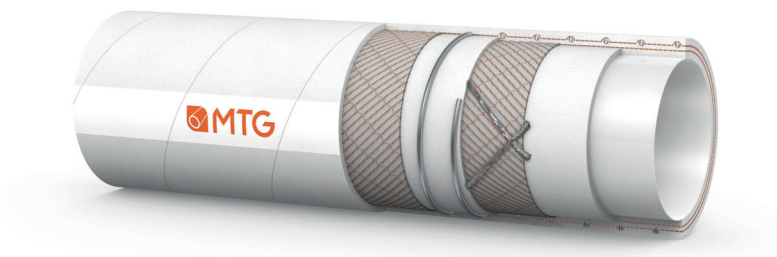
Cod. IT-M00049

UPDATED: 02/19
Rev: 004



MANIFATTURA TUBI GOMMA S.p.A.

Grisignano di Zocco, 36040 (VI) ITALY
T. +39 0444.614755 | info@mtgspa.com
www.mtgspa.com



APPLICATION

- Multipurpose hose, specifically designed for conveying chemical, pharmaceutical, cosmetic and food products in pharma-cosmetic, biotech and food industries.
- Excellent solution for processing industries requiring utmost safety during transport of high purity products.
- Suction and delivery hose.

CONSTRUCTION

TUBE

- MFA liner (Perfluoralkoxy), light colour, fully fluorinated, mirror-smooth.
- Compliance: USP Class VI, FDA Standards, D.M. 21/03/73 and following amendments, Regulation (EU) n. 10/2011.
- Absolute and long-term resistance to heat, cracking under stress and bending.

REINFORCEMENT

- High strength plies of synthetic cord and embedded steel helix wire.
- Two copper wires.

COVER

- EPDM rubber (code 140BI), light colour, smooth, food quality, abrasion, ozone and weather resistant, cloth finish.
- Compliance acc. to FDA Standards.

NOTE

- We suggest you to follow the instructions mentioned in the MTG "Use and maintenance guide for PFA/MFA hoses".

MAIN BENEFITS

- It provides an excellent resistance to extreme temperatures and a good resistance to mechanical stress.
- The cover prevents any potential risk of contamination of the working environments.
- Hose in accordance with EC 1935/2004 and 2023/2006/EC (GMP). The MTG production cycle is free from animal derived ingredients, phthalates, adipates and materials subject to restrictions acc. to EC 1907/2006 (REACH).

TEMPERATURE RANGE

- From -50°C to +170°C depending on the fluids conveyed. The a.m. temperature range has to be considered as a rough indication referring to most chemicals; however it does not include the most aggressive product combinations and conditions of use. For specific applications please contact our Technical Department.
- Sterilization up to +130°C for max. 30 minutes.

SAFETY FACTOR

- ≥ 4 times working pressure.

PATENTS

- E.P. 14500092.

MARKING

MTG PHARMAFLON

E.PATENT 1450092

USP

EU

ISO

FDA

DM

MADE IN

ITALY

TECHNICAL SPECIFICATIONS

SIZE TOLERANCES: I.D.: ISO 1307 - Wall thickness: DIN 7715 T4 S2 - Length: ISO 1307

Inner Diameter mm	Outer diameter mm	Wall thickness mm	Working pressure BAR	Burst pressure BAR	Min. bending radius mm	Vacuum BAR	Approx. weight kg/m	Max. length m
13	25	6.0	10	40	60	-0.9	0.55	20
19	31	6.0	10	40	90	-0.9	0.72	30
25	37	6.0	10	40	140	-0.9	0.89	30
32	45	6.5	10	40	200	-0.9	1.20	30
38	51	6.5	10	40	250	-0.9	1.47	30
51	65.5	7.25	10	40	300	-0.9	2.08	30
51	67	8.0	10	40	300	-0.9	2.20	30
63.5	79.5	8.0	10	40	380	-0.9	3.00	20
76	92	8.0	10	40	500	-0.9	3.48	20
100	116	8.0	10	40	550	-0.9	4.90	20

Chemical resistance acc. to MTG Chemical Resistance Chart. Above technical data refer to application at room temperature (+20°C). Other sizes and colours are available upon request. Please contact our Sales Department.



MANIFATTURA TUBI GOMMA S.p.A.

Grisignano di Zocco, 36040 (VI) ITALY
T. +39 0444.614755 | info@mtgspa.com
www.mtgspa.com



APPLICATION

- This hose has been designed for conveying pharmaceutical, food and cosmetic products. Suction and delivery hose.
- Excellent solution for conveying high purity fluids; it combines the benefits of a special antistatic PFA tube with the platinum-cured silicone structure.
- Produced with **MTGp™** technology (Manufacturing Tubing Green process).
- Hose suitable for the transport of NON-ABRASIVE powders.

CONSTRUCTION

TUBE

- PFA (Perfluoro Alcoxy, black PFA), fully fluorinated, black colour, antistatic ($R < 10^6$ Ohm), mirror-smooth.
- Complying with USP Class VI and FDA Standards.

REINFORCEMENT

- High strength plies of synthetic cord.
- Stainless steel helix wire.
- Braided stainless steel wire mesh.

COVER

- Translucent non-toxic platinum silicone (code 3362PT-SILICONE/CLEARWAY-PLATINUM), light colour, glossy finish (no cloth finish).
- It does not generate any residuals in comparison with the traditional cloth finish. It may easily be washed with cleaning products.
- Complying with USP Class VI, EU Pharmacopoeia and FDA Standards.

PATENTS

- E.P. 1450092.

SAFETY FACTOR

- ≥ 6 times working pressure.

MAIN BENEFITS

- 100% safe transport of the fluid: no risk of contamination.
- Antistatic tube.
- No use of additives or chemicals potentially dangerous for environment and human health.
- Marking made with food quality pigments.
- Traceability is ensured for the whole production process of the hose.
- Hose in accordance with EC 1935/2004 and 2023/2006/EC (GMP).
- The MTG production cycle is free from animal derived ingredients, phthalates, adipates and materials subject to restrictions acc. to EC 1907/2006 (REACH).

TEMPERATURE RANGE

- From -30°C to $+150^{\circ}\text{C}$ depending on the fluids conveyed and on the kind of use.

STERILIZATION

- Sterilization with steam up to $+210^{\circ}\text{C}$, in an open circuit, for max 30 minutes.
- For other cleaning, disinfection and sterilization processes with steam, please contact our Sales Department.

FITTING

- It may be supplied with couplings lined with black conductive PFA (clamps, flanges, kamlocks etc.).

NOTE

- We suggest you to follow the instructions mentioned in the MTG "Use and maintenance guide for PFA/MFA hoses".

MARKING


HOSE TESTED FOR USE IN ATEX ZONES
ATTESTATION NUMBER INHERS-16-AM-342

MADE IN CLEANROOM
ISO 14644-1 CLASS 8


E.PATENT 1450092

MADE IN ITALY

TECHNICAL SPECIFICATIONS

SIZE TOLERANCES: I.D.: ISO 1307 - Wall thickness: $\pm 0.8\text{ mm}$ - Length: ISO 1307

Inner Diameter mm	Working pressure BAR	Burst pressure BAR	Vacuum BAR	Min. bending radius mm	Max. length m
19	10	60	-0.9	120	20
25	10	60	-0.9	150	20
32	10	60	-0.9	200	20
38	10	60	-0.9	250	20
51	10	60	-0.9	300	20

Above technical data refer to application at room temperature ($+20^{\circ}\text{C}$).
Other sizes are available upon request. Please contact our Sales Department.



Cod. IT-M00161

UPDATED: 04/18
Rev: 000



MANIFATTURA TUBI GOMMA S.p.A.

Grisignano di Zocco, 36040 (VI) ITALY
T. +39 0444.614755 | info@mtgspa.com
www.mtgspa.com



APPLICATION

- This hose has been designed for conveying pharmaceutical, food and cosmetic products. Suction and delivery hose.
- Excellent solution for conveying high purity fluids; it combines the benefits of a special antistatic PFA tube with the platinum-cured silicone structure.
- Produced with **MTGp™** technology (Manufacturing Tubing Green process).
- Hose suitable for the transport of non-abrasive powders.

CONSTRUCTION

TUBE

- PFA (Perfluoroalkoxy), fully fluorinated, black, antistatic ($R < 10^6 \Omega$), mirror-smooth.
- Compliance: USP Class VI, FDA Standards, D.M. 21/03/73 and following amendments, Regulation EU n. 10/2011, ISO 10993-4, -10, -11, non cytotoxic according to ISO 10993-Part 5.

REINFORCEMENT

- High strength plies of synthetic cord and stainless steel helix wire.

COVER

- Non-toxic platinum-cured silicone (code: silicone PT3362), translucent, glossy finish.
- It may be easily cleaned with any mild detergent.
- Compliance: USP Class VI, FDA Standards, BfR, and European Pharmacopoeia (E.P. 3.1.9), ISO 10993-4, -10, -11, non cytotoxic according to ISO 10993-Part 5.

PATENTS

- E.P. 1450092.

CERTIFICATIONS

- Hose approved by the Institute Ineris, attestation nr. INERIS-16-AM-342, for use in Atex areas.

SAFETY FACTOR

- ≥ 3 times working pressure.

MAIN BENEFITS

- Antistatic tube.
- Made in Cleanroom ISO 14644-1 Class 8.
- No use of additives or chemicals potentially dangerous for environment and human health.
- Hose in accordance with EC 1935/2004 and 2023/2006/EC (GMP).
- The MTG production cycle is free from animal derived ingredients, phthalates, adipates, nitrosamines, and materials subject to restrictions according to EC 1907/2006 (REACH).
- Non-plasticized hose.

TEMPERATURE RANGE

- From -30°C to +150°C, depending on the fluids conveyed and the application.

STERILIZATION

- Sterilization with steam up to +135°C, in an open circuit, for max 30 minutes.
- For other cleaning, disinfection and sterilization processes with steam, please contact our Sales Department.

FITTING

- It may be supplied with black conductive PFA-lined fittings (clamp, flange, camlock etc.).

NOTE

- We suggest you to follow the instructions mentioned in the MTG "Use and maintenance guide for PFA/MFA hoses".

MARKING


 HOSE TESTED FOR USE IN ATEX ZONES
 ATTESTATION NUMBER INERIS-16-AM-342
 
 MADE IN CLEANROOM
 ISO 14644-1 CLASS 8
 



 E.PATENT 1450092
 

TECHNICAL SPECIFICATIONS

SIZE TOLERANCES: I.D.: ISO 1307 - Wall thickness: $\pm 0.8\text{mm}$ - Length: ISO 1307

Inner Diameter mm	Outer diameter mm	Wall thickness mm	Working pressure BAR	Burst pressure BAR	Vacuum BAR	Min. bending radius mm	Approx. weight kg/m	Max. length m
19	31	6.0	10	30	-0.9	120	0.68	30
25	37	6.0	10	30	-0.9	150	0.82	30
32	44	6.0	10	30	-0.9	200	1.04	30
38	52	7.0	10	30	-0.9	250	1.52	30
51	67	8.0	10	30	-0.9	300	1.96	30
63.5	79.5	8.0	5	15	-0.9	380	2.57	20
76	92	8.0	5	15	-0.9	460	3.66	20

Above technical data refer to application at room temperature (+20°C). Other sizes are available upon request. Please contact our Sales Department.



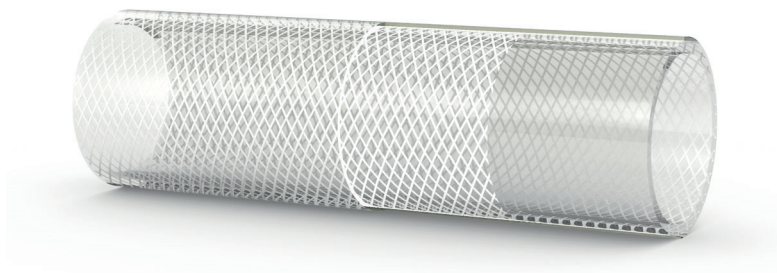
Cod. IT-M00135

UPDATED: 01/20
Rev: 006



MANIFATTURA TUBI GOMMA S.p.A.

Grisignano di Zocco, 36040 (VI) ITALY
T. +39 0444.614755 | info@mtgspa.com
www.mtgspa.com



APPLICATION

- Platinum-cured silicone hose, designed for conveying high-purity products.
- It is normally used in the pharmaceutical, cosmetic, biotech and food industry.
- Delivery hose, not recommended for suction.
- Hose in accordance with EC 1935/2004.
- Autoclavable.

CONSTRUCTION

TUBE

- Platinum-cured silicone rubber, pharmaceutical and food quality, light colour, odourless and tasteless, mirror smooth.

REINFORCEMENT

- Plies of synthetic cord.

COVER

- Platinum-cured silicone rubber, pharmaceutical and food quality, light colour, odourless and tasteless, mirror smooth.

STANDARDS

- Tube and cover: USP Class VI, 3A, FDA Standards, European Pharmacopoeia (E.P. 3.1.9.), BfR Recommendation XV, ISO 10993-4, -11, non-cytotoxic according to ISO 10993-Part 5, ICH Q3D.

MAIN BENEFITS

- Non-stick hose: it provides utmost safety during transport of high-purity fluids, thus removing the risk of bacterial growth on the hose surfaces.
- Perfectly smooth: it may easily be cleaned.
- Translucent, platinum-cured silicone: the see-through material is important for liquid-handling applications where the flow must be monitored.
- Non-plasticized hose.
- Made in cleanroom.

TEMPERATURE RANGE

- From -60°C to +180°C depending on the fluids conveyed.

STERILIZATION

- Sterilization with steam up to +135°C or, as an alternative, cobalt or argon radiations.

SAFETY FACTOR

- ≥ 3 times working pressure.

FITTING

- By means of clamps, collars or crimping.
- If required, we can supply special reusable fittings ensuring a regular flow and preventing turbulences inside the hose.

TECHNICAL SPECIFICATIONS

SIZE TOLERANCES: I.D.: ISO 1307 - Wall thickness: DIN 7715 T4 S2 - Length: ISO 1307

Inner Diameter mm	Outer diameter mm	Wall thickness mm	Working pressure BAR	Burst pressure BAR	Min. bending radius mm	Vacuum BAR	Approx. weight gr/m	Max. length m
3.18	9.80	-	15	45	30	-	70	25
4.72	11.35	-	15	45	35	-	106	25
6.35	13.03	-	15	45	40	-	124	25
7.93	14.61	-	12	36	45	-	147	25
9.52	16.32	-	12	36	50	-	175	25
12.70	20.10	-	10	30	65	-	237	25
15.87	24.37	-	8	24	75	-	330	25
19.05	27.91	-	8	24	80	-	415	25
22.20	31.12	-	5	15	100	-	455	25
25.40	34.50	-	5	15	120	-	513	10
31.75	40.80	-	4	12	150	-	617	10

Chemical resistance acc. to MTG Chemical Resistance Chart. Above technical data refer to application at room temperature (+20°C). Other sizes and colours are available upon request. Please contact our Sales Department.



Cod. IT-M00084

UPDATED: 02/21
Rev: 005



MANIFATTURA TUBI GOMMA S.p.A.

Grisignano di Zocco, 36040 (VI) ITALY
T. +39 0444.614755 | info@mtgspa.com
www.mtgspa.com



APPLICATION

- Multipurpose hose designed to ensure utmost purity during transport of pharmaceutical, cosmetic, food and chemical products in aseptic areas.
- Specifically engineered to combine the technical benefits of a perfluoropolymer with the elasticity and heat resistance of silicone.

CONSTRUCTION

TUBE

- PFA (Perfluoroalkoxy), fully fluorinated, white colour, mirror-smooth. Odourless and tasteless.
- Excellent flex-performance (resistance to repeated bending cycles in accordance with ASTM D 2176).
- Compliance: USP Class VI, 3-A Sanitary Standards n.20-27, FDA Standards, D.M. 21/03/73 and following amendments, Regulation EU n. 10/2011, ISO 10993-4, -10, -11, non-cytotoxic according to ISO 10993-Part 5, ICH Q3D.

REINFORCEMENTS

- High strength plies of synthetic cord
- Embedded stainless steel helix wire.

COVER

- Translucent silicone rubber (code: silicone 3362PT), ultra smooth and glossy finish.
- It may be easily cleaned with any mild detergent.
- Special finish with a low coefficient of friction.
- Compliance: USP Class VI, 3-A Sanitary Standards 18-03-Class I, FDA Standards, BfR, European Pharmacopoeia 3.1.9, ISO 10993-4, -10, -11, non-cytotoxic according to ISO 10993-Part 5.

PATENT

- E.P. 1450092.

MAIN BENEFITS

- Platinum-cured silicone cover with non-stick properties.
- Fluorinated, ultra-smooth inert liner, embedded into a high purity structure.
- Made in Cleanroom ISO 14644-1 Class 8.
- High flexibility, even under high and low temperature conditions, and excellent resistance of the structure to dynamic stress.
- Hose in accordance with EC 1935/2004 and 2023/2006/EC (GMP).
- The MTG production cycle does not employ animal derived ingredients, phthalates, adipates, nitrosamines, and materials subject to restrictions acc. to EC 1907/2006 (REACH).

SAFETY FACTOR

- ≥ 3 times working pressure.

TEMPERATURE RANGE

- From -30°C to +150°C depending on the fluids conveyed.

STERILIZATION

- Sterilization with steam up to +135°C at 3.5 bar for max. 30 minutes.

NOTE

- We suggest you to follow the instructions mentioned in the MTG "Use and maintenance guide for PFA/MFA hoses".

MARKING

 MTG-DYNAMIC Cleanroom PLATINUM

MADE IN CLEANROOM
ISO 14644-1 CLASS 8

E. PATENT 1450092



TECHNICAL SPECIFICATIONS

SIZE TOLERANCES: I.D.: ISO 1307 - Wall thickness: ± 0.8 mm - Length: ISO 1307

Inner Diameter mm	Outer diameter mm	Wall thickness mm	Working pressure BAR	Burst pressure BAR	Vacuum BAR	Min. bending radius (Static) mm	Min. bending radius (Dynamic) mm	Approx. weight kg/m	Max. length m
10	22	6.0	10	30	-0.9	35	50	0.36	20
13	25	6.0	10	30	-0.9	45	60	0.42	20
16	28	6.0	10	30	-0.9	55	75	0.57	20
19	31	6.0	10	30	-0.9	65	90	0.65	30
25	37	6.0	10	30	-0.9	85	140	0.80	30
32	44	6.0	10	30	-0.9	120	200	1.00	30
38	51	6.5	10	30	-0.9	140	250	1.27	30
51	67	8.0	10	30	-0.9	180	300	1.98	30
63.5	79.5	8.0	5	15	-0.9	320	380	2.53	20
76	92	8.0	5	15	-0.9	380	460	3.62	20
100	118	9.0	3	9	-0.9	500	600	5.02	20

Above technical data are referring to application at room temperature (+20°C). Chemical resistance according to MTG Chemical Resistance Chart.
Other sizes are available upon request. Please contact our Sales Department.



Cod. IT-D00050

UPDATED: 06/22
Rev: 008



MTG CLEARWAY/HD-Platinum

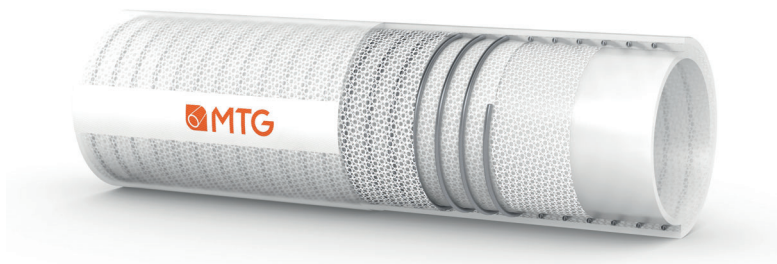


Management
System
ISO 9001:2015
ISO 14001:2015
ISO 45001:2018
www.tuv.com
ID: 810505817



MANIFATTURA TUBI GOMMA S.p.A.

Grisignano di Zocco, 36040 (VI) ITALY
T. +39 0444.614755 | info@mtgspa.com
www.mtgspa.com



APPLICATION

- Silicone hose for suction and delivery of high purity products, foodstuff and fluids with alcohol content up to 96%.
- Reinforced version suitable for process applications requiring a tight bending radius and a high vacuum resistance.
- Normally used in food, pharmaceutical and cosmetic industries.
- Resistant to suction.

CONSTRUCTION

TUBE

- Silicone rubber, translucent (code 3362PT), food and pharmaceutical quality, odourless and tasteless, smooth, glossy finish.

REINFORCEMENT

- High strength synthetic plies.
- Embedded stainless steel helix wire.

COVER

- Silicone rubber, translucent (code 3362PT), food and pharmaceutical quality, smooth with glossy finish.
- It may easily be cleaned with any mild detergent.

STANDARDS

- US Pharmacopoeia Class VI, non-cytotoxic acc. to ISO 10993-Part 5.
- Compliance: European Pharmacopoeia 3.1.9, ISO 10993-4, -10, -11, 3-A Sanitary Standards n.18-03-Class I, FDA Standards, BfR, D.M. 21/03/73 and following amendments, arrêté du 25 novembre 1992 relatif aux matériaux et objets en élastomères de silicone.

SAFETY FACTOR

- ≥ 3 times working pressure.

MAIN BENEFITS

- Platinum-cured silicone hose with non-stick properties.
- From raw material to packaged product, **the hose is manufactured in a cleanroom class 8, certified In Operation** according to the ISO 14644-1 standard. **MTG guarantees full traceability of the production process.**
- Used in aseptic environments and sanitary applications: produced with the utmost care, from the choice of high-purity ingredients to production and storing procedures.
- Hose in accordance with EC 1935/2004 and 2023/2006/EC (GMP).
- The MTG production cycle is free from animal derived ingredients, phthalates, adipates, nitrosamines, and materials subject to restrictions acc. to EC 1907/2006 (REACH).
- Non-plasticized hose.
- On demand, Leachables & Extractables tests are available.

TEMPERATURE RANGE

- From -60°C to +200°C.

STERILIZATION

- Sterilization with steam up to +135°C at 3.5 bar for max. 90 minutes.
- Sterilization with hot air up to +200°C for max. 30 minutes.
- Sterilizations repeated at intervals of less than 1 hour may seriously affect the mechanical features of the hose.

MARKING



MTG CLEARWAY HD PLATINUM

MADE IN CLEANROOM
ISO 14644-1 CLASS 8



TECHNICAL SPECIFICATIONS

SIZE TOLERANCES: I.D.: ISO 1307 - Wall thickness: $\pm 1/-0.5$ mm - Length: ISO 1307

Inner Diameter mm	Outer diameter mm	Wall thickness mm	Working pressure* BAR	Burst pressure BAR	Min. bending radius mm	Vacuum BAR	Approx. weight kg/m	Max. length m
10	22	6.0	10	30	50	-0.9	0.38	30
13	25	6.0	10	30	52	-0.9	0.45	30
16	29	6.5	10	30	60	-0.9	0.53	30
19	32	6.5	10	30	66	-0.9	0.62	30
25	38	6.5	10	30	86	-0.9	0.75	30
32	45	6.5	10	30	110	-0.9	0.92	30
38	52	7.0	10	30	130	-0.9	1.25	30
50	64	7.0	10	30	200	-0.9	1.62	30
63.5	77.5	7.0	8	24	250	-0.9	2.22	20
75	89	7.0	8	24	350	-0.9	2.70	20
100	114	7.0	7	21	500	-0.9	3.62	20

(*) At a temperature of +100°C the W.P. decreases by 20%.

Chemical resistance acc. to MTG Chemical Resistance Chart. Above technical data refer to application at room temperature (+20°C).

Other sizes are available on demand. Please contact our Sales Department.



Cod. IT-M00124

UPDATED: 07/21
Rev: 005

MANIFATTURA TUBI GOMMA S.p.A.

Grisignano di Zocco, 36040 (VI) ITALY
T. +39 0444.614755 | info@mtgspa.com
www.mtgspa.com



Management
System
ISO 9001:2015
ISO 14001:2015
ISO 45001:2018
www.tuv.com
ID: 8105050517



APPLICATION

- Silicone hose for delivery of high purity products, foodstuff and fluids with alcohol content up to 96%.
- Normally used in food, pharmaceutical and cosmetic industries.

CONSTRUCTION

TUBE

- Silicone rubber, translucent (code PT3362), food and pharmaceutical quality, odourless and tasteless, smooth, glossy finish.

REINFORCEMENT

- High-strength plies of synthetic cord.

COVER

- Silicone rubber, translucent (code PT3362), food and pharmaceutical quality, odourless and tasteless. Smooth with glossy finish.
- It may easily be washed with any mild detergents.

STANDARDS

- US Pharmacopoeia Class VI, non-cytotoxic acc. to ISO 10993-Part 5.
- Compliance: European Pharmacopoeia 3.1.9, ISO 10993-4, -10, -11, 3-A Sanitary Standards n.18-03-Class I, FDA Standards, BfR, D.M. 21/03/73 and following amendments, arrêté du 25 novembre 1992 relatif aux matériaux et objets en élastomères de silicone.

SAFETY FACTOR

- ≥ 4 times working pressure.

MAIN BENEFITS

- Platinum-cured silicone hose with non-stick properties.
- From raw material to packaged product, **the hose is manufactured in a cleanroom class 8, certified In Operation** according to the ISO 14644-1 standard. **MTG guarantees full traceability of the production process.**
- Used in aseptic environments and sanitary applications: produced with the utmost care, from the choice of high-purity ingredients to production and storing procedures.
- Hose in accordance with EC 1935/2004 and 2023/2006/EC (GMP).
- The MTG production cycle is free from animal derived ingredients, phthalates, adipates, nitrosamines, and materials subject to restrictions acc. to EC 1907/2006 (REACH).
- Non-plasticized hose.
- On demand, Leachables & Extractables tests are available.

TEMPERATURE RANGE

- From -60°C to +200°C.

STERILIZATION

- Sterilization with steam up to +135°C , at 3.5 bar for max 90 minutes.
- Sterilization with hot air up to +200°C for max 30 minutes.
- Sterilizations repeated at intervals of less than 1 hour may seriously affect the mechanical features of the hose.

MARKING



MTG-CLEARWAY PLATINUM

MADE IN CLEANROOM
ISO 14644-1 CLASS 8



TECHNICAL SPECIFICATIONS

SIZE TOLERANCES: I.D.: ISO 1307 - Wall thickness: +1/-0.5mm - Length: ISO 1307

Inner Diameter mm	Outer diameter mm	Wall thickness mm	Working pressure* BAR	Burst pressure BAR	Min. bending radius mm	Vacuum BAR	Approx. weight kg/m	Max. length m
13	24	5.5	10	40	-	-	0.374	30
19	30	5.5	10	40	-	-	0.490	30
25	37	6.0	10	40	-	-	0.602	30
38	49	5.5	10	40	-	-	0.862	30
51	62	5.5	7	28	-	-	1.222	30

(*) At a temperature of +100°C the W.P. decreases by 20%.

Chemical resistance acc. to MTG Chemical Resistance Chart. Above technical data refer to application at room temperature (+20°C). Other sizes are available upon request. Please contact our Sales Department.



Cod. IT-M00130

UPDATED: 07/22
Rev: 006



MANIFATTURA TUBI GOMMA S.p.A.

Grisignano di Zocco, 36040 (VI) ITALY
T. +39 0444.614755 | info@mtgspa.com
www.mtgspa.com



APPLICATION

- Multipurpose hose designed to ensure utmost purity during transport of pharmaceutical, cosmetic, food and chemical products in aseptic areas.
- Especially suitable for applications in which it is necessary to check the flow of the fluid conveyed.
- Specifically engineered to combine the technical benefits of a perfluoropolymer with the elasticity and heat resistance of silicone.

CONSTRUCTION

TUBE

- PFA (Perfluoroalkoxy), fully fluorinated, translucent, mirror-smooth. Odourless and tasteless.
- Excellent flex-performance (resistance to repeated bending cycles in accordance with ASTM D 2176).
- Compliance: USP Class VI, 3-A Sanitary Standards n.20-27, FDA Standards, Regulation EU n. 10/2011, ISO 10993-4, -10, -11, non-cytotoxic according to ISO 10993-Part 5, ICH Q3D.

REINFORCEMENTS

- Embedded steel helix wire AISI 302.

COVER

- Translucent silicone rubber (code: silicone 3362PT), ultra smooth and glossy finish.
- It may be easily cleaned with any mild detergent.
- Special finish with a low coefficient of friction.
- Compliance: USP Class VI, 3-A Sanitary Standards 18-03-Class I, FDA Standards, D.M. 21/03/73 and following amendments, BfR, European Pharmacopoeia 3.1.9, ISO 10993-4, -10, -11, non-cytotoxic according to ISO 10993-Part 5.

NOTE

- We suggest you to follow the instructions mentioned in the MTG "Use and maintenance guide for PFA/MFA hoses".

MAIN BENEFITS

- See-through construction for easy visual inspection of the media conveyed.
- Platinum-cured silicone cover with non-stick properties.
- Fluorinated, ultra-smooth chemically-inert liner, embedded into a high purity structure.
- Made in Cleanroom ISO 14644-1 Class 8.
- High flexibility, even under high and low temperature conditions, and excellent resistance of the structure to dynamic stress.
- Hose in accordance with EC 1935/2004 and 2023/2006/EC (GMP).
- The MTG production cycle does not employ animal derived ingredients, phthalates, adipates, nitrosamines, and materials subject to restrictions acc. to EC 1907/2006 (REACH).

SAFETY FACTOR

- ≥ 3 times working pressure.

TEMPERATURE RANGE

- From -30°C to +150°C depending on the fluids conveyed.

STERILIZATION

- Sterilization with steam up to +135°C without pressure in an open circuit for max 30 minutes.

MARKING

MTG MTG-ULTRAPURA PLATINUM

MADE IN CLEANROOM
ISO 14644-1 CLASS 8

USP CLASS VI
EU 3A
FDA 3A

TECHNICAL SPECIFICATIONS

SIZE TOLERANCES: I.D.: ISO 1307 - Wall thickness: ± 0.8 mm - Length: ISO 1307

Inner Diameter mm	Outer diameter mm	Wall thickness mm	Working pressure BAR	Burst pressure BAR	Vacuum BAR	Min. bending radius (Static) mm	Min. bending radius (Dynamic) mm	Approx. weight kg/m	Max. length m
13	23	5.0	3	9	-0.9	45	60	0.42	30
19	29	5.0	3	9	-0.9	65	90	0.65	30
25	35	5.0	3	9	-0.9	85	140	0.80	30
38	48	5.0	1	3	-0.9	135	210	1.10	30
51	61	5.0	1	3	-0.9	180	280	1.60	30

Above technical data are referring to application at room temperature (+20°C). Chemical resistance according to MTG Chemical Resistance Chart.
Other sizes are available upon request. Please contact our Sales Department.



Cod. IT-U00044

UPDATED: 07/20
Rev: 000